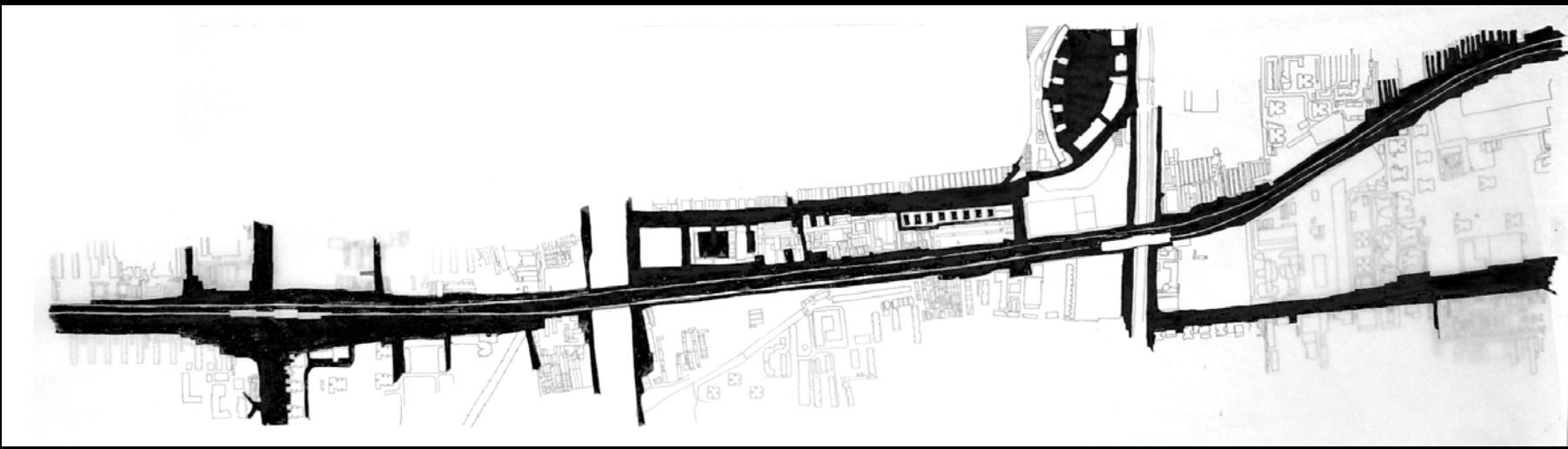
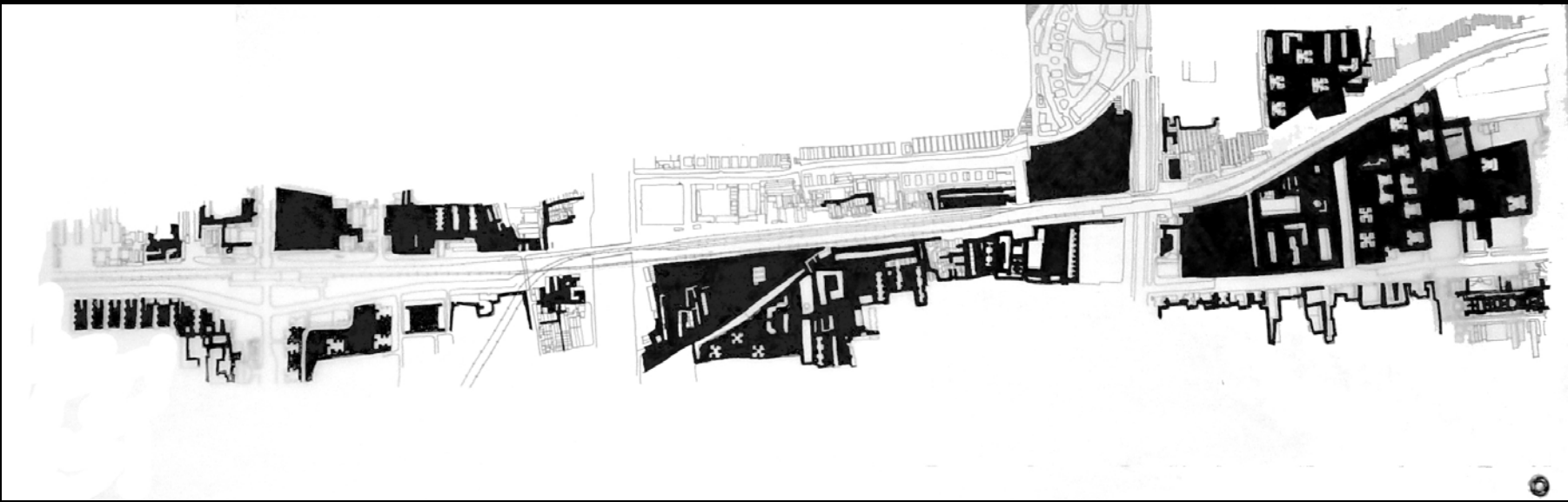


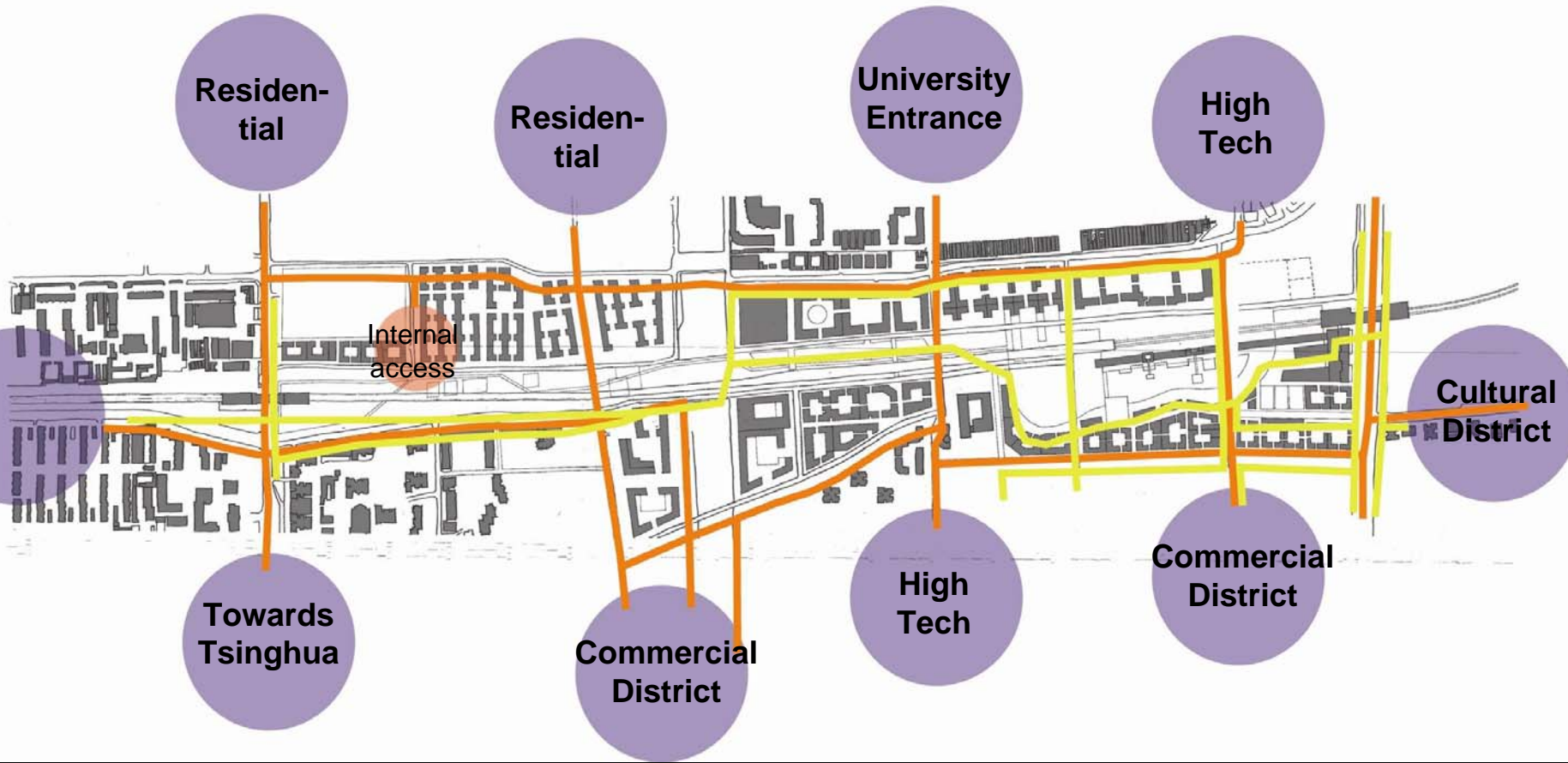
WELCOME TO THE GREEN STREET

DESIGN PRINCIPLES



1. To design open space as connections—to bridge through the urban fabric to both sides of the tracks
2. To exploit the use of sidewalks as the primary public space
3. To design open spaces within communities that transition the gap between public and private
4. To exploit the train stations as major activity-generating nodes
5. To use parking at stations, sidewalks, and apartment complexes as alternative public space
6. To use landscaping elements as acoustical barriers for the train track and the ring roads

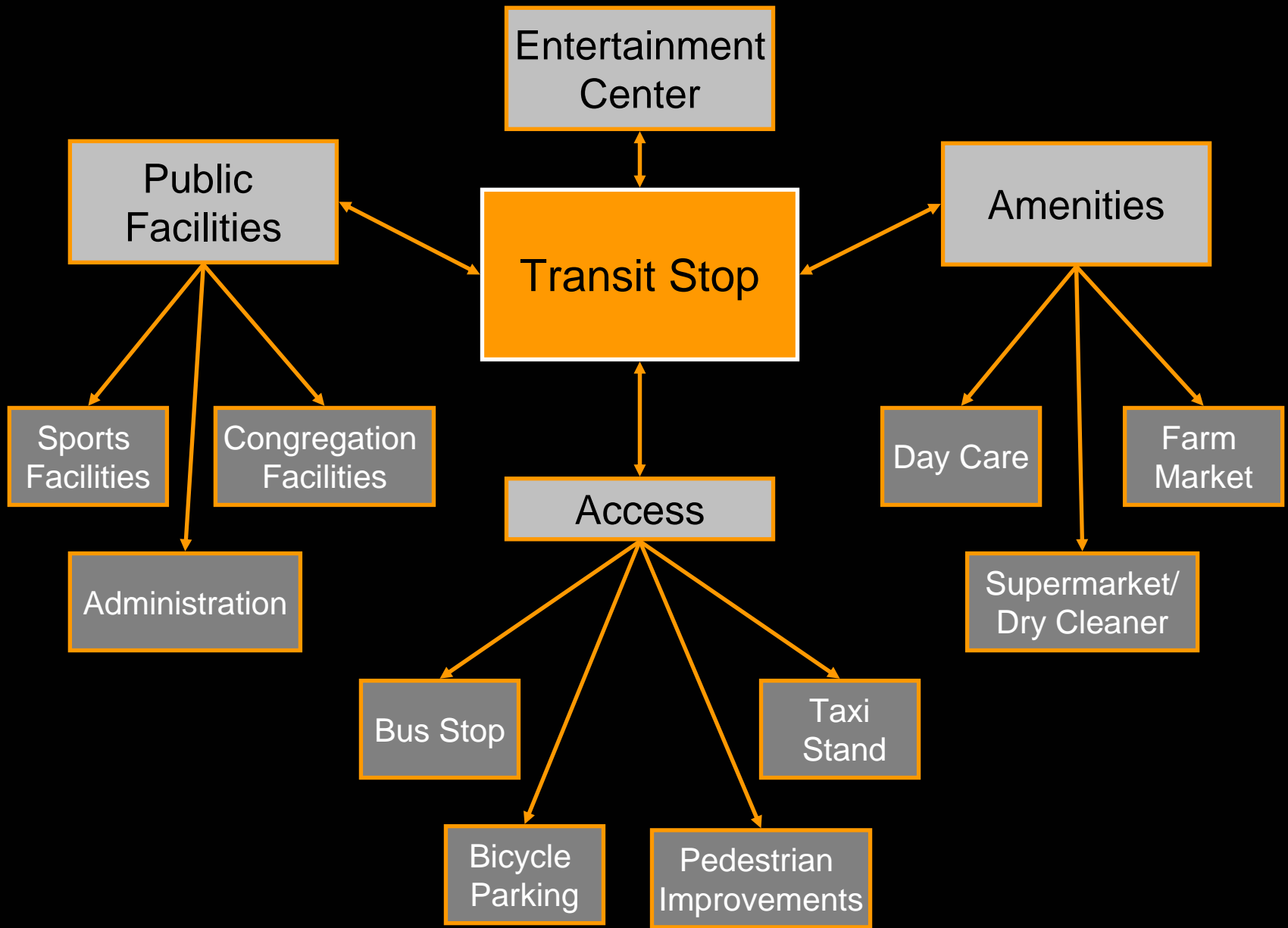
CIRCULATION



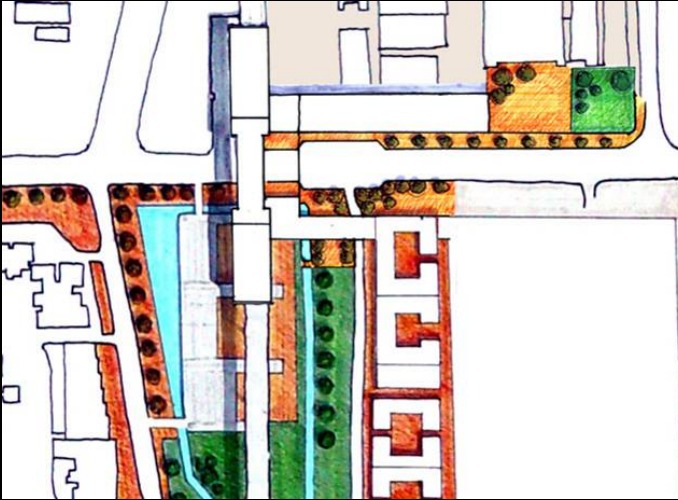
MASTER PLAN



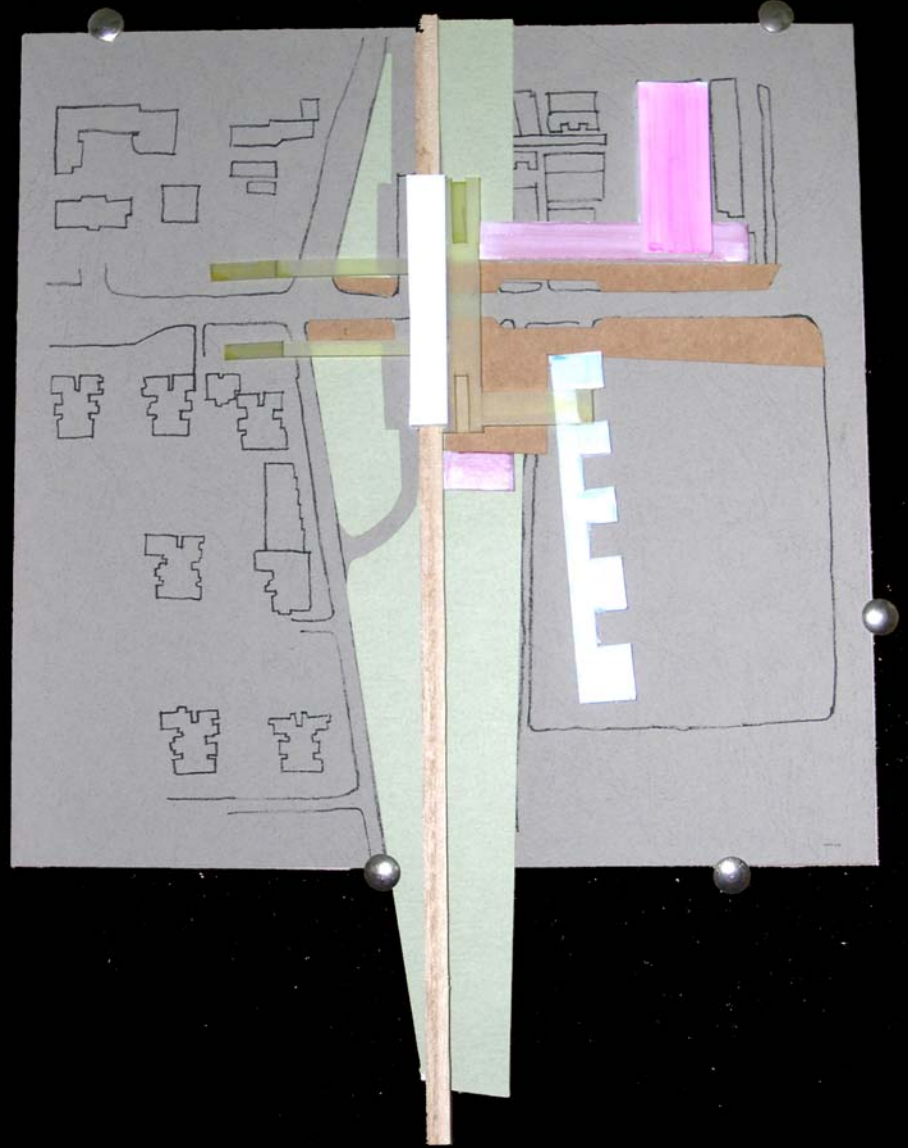
Major Revision Areas

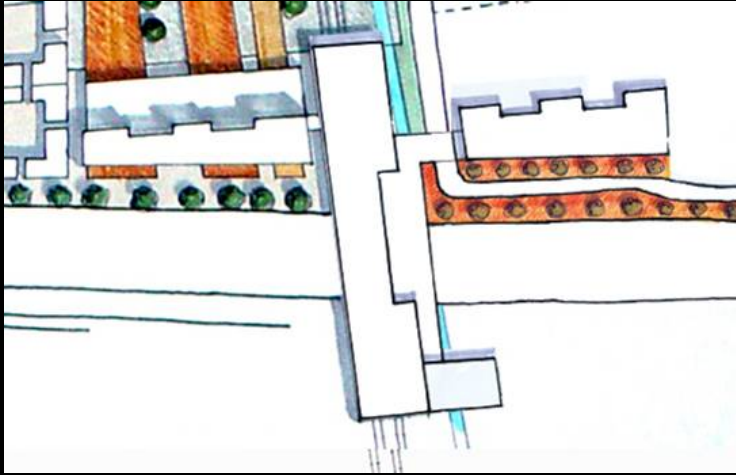


Station Revisions: Programming and Access

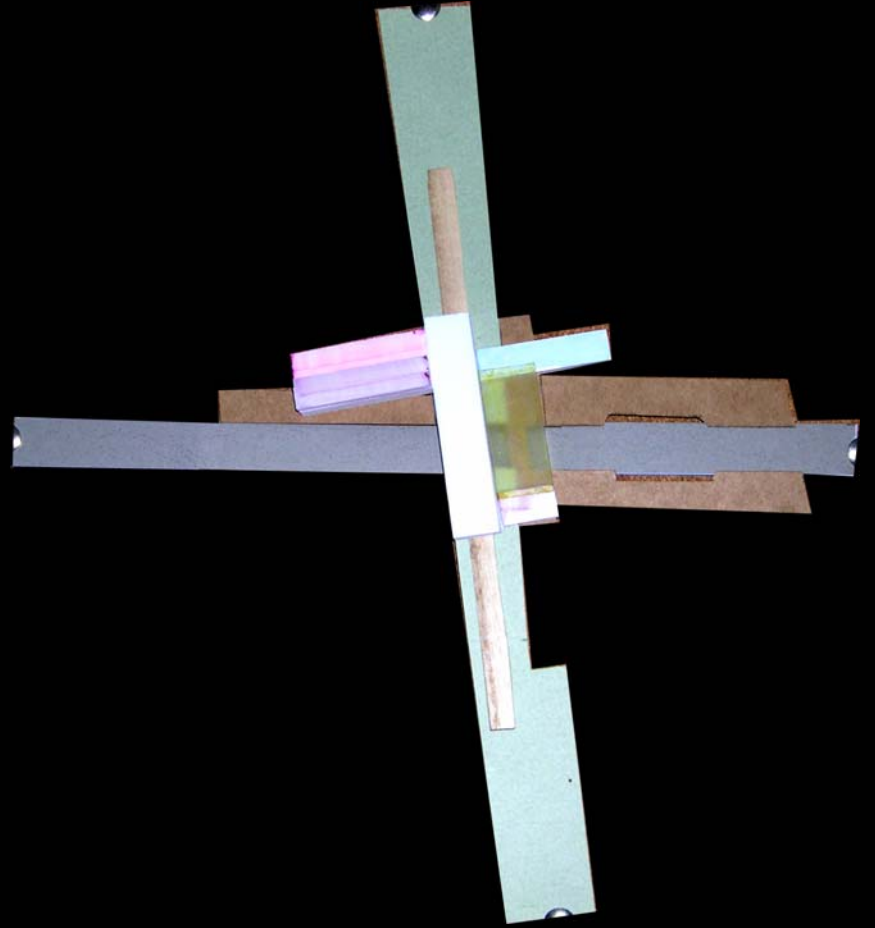


Revision 1:
Wudaokou Station





Revision 2:
Zhi Chun Lun Station



Revision 3:
Intersection Entrance





Revision 4:
Business Center





Detail Area

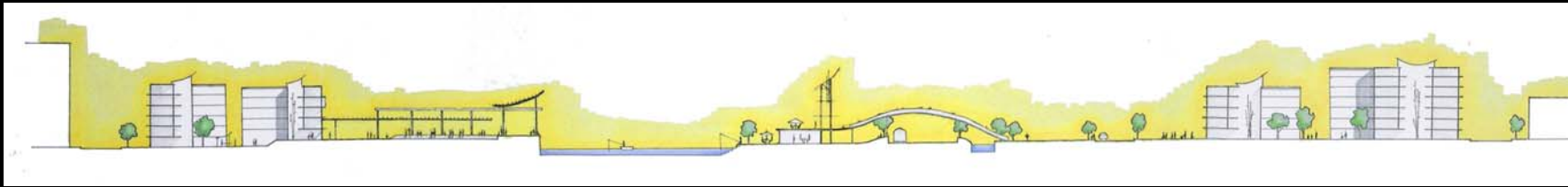


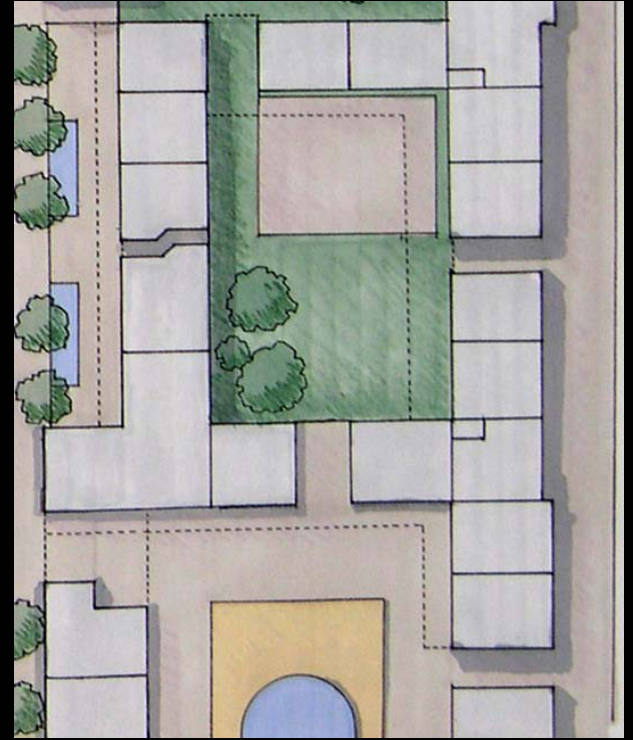
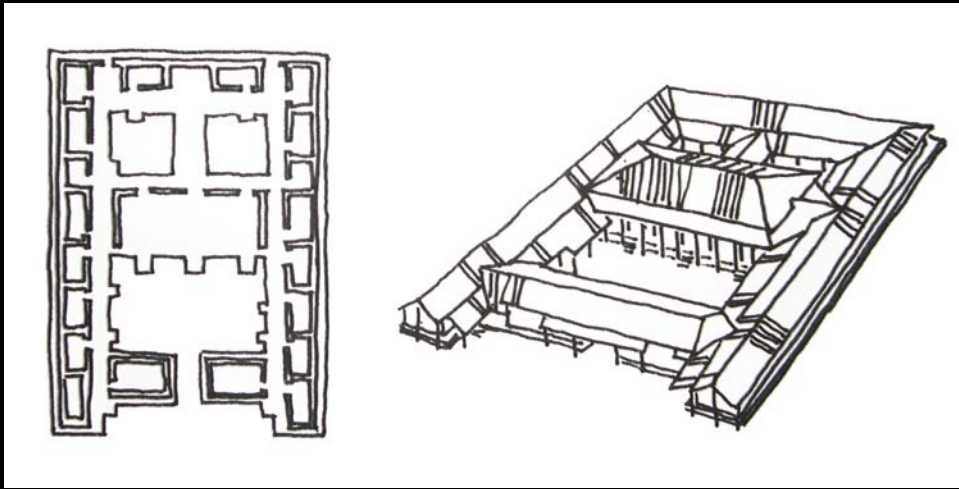
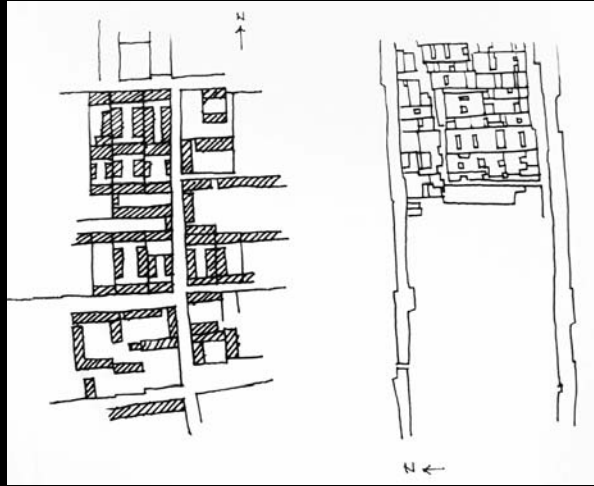
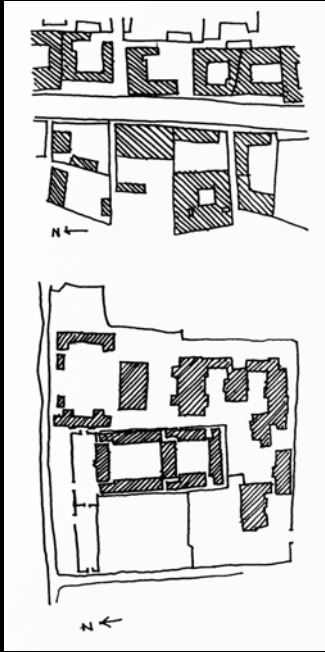
1:500 Plan



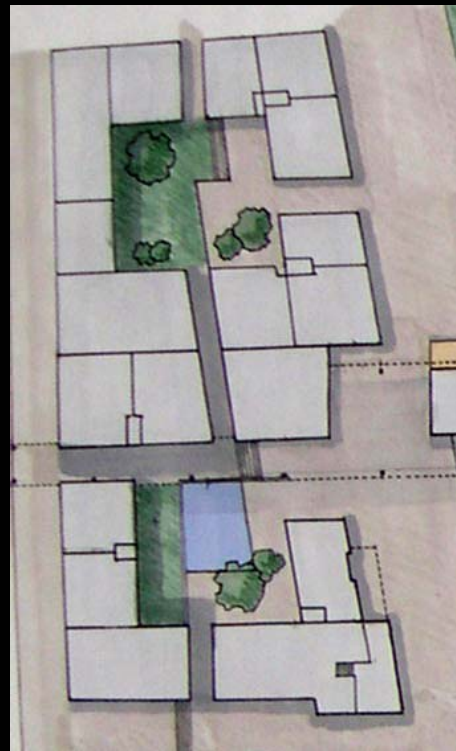
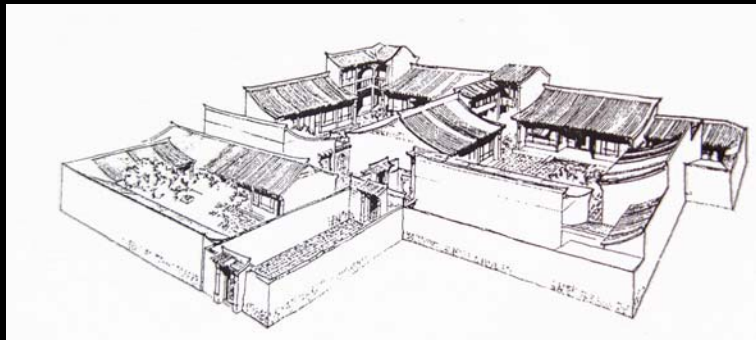
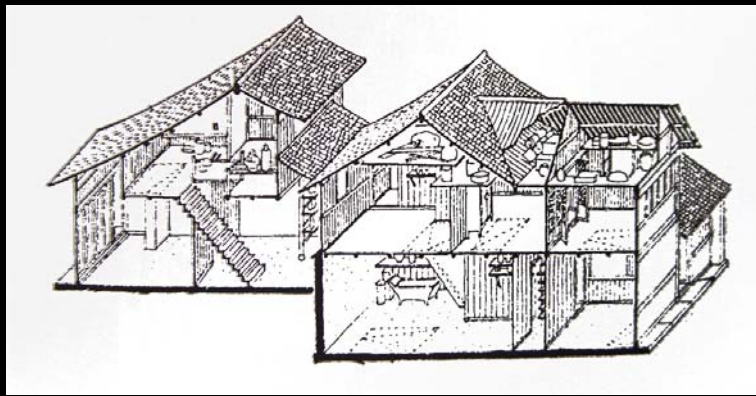
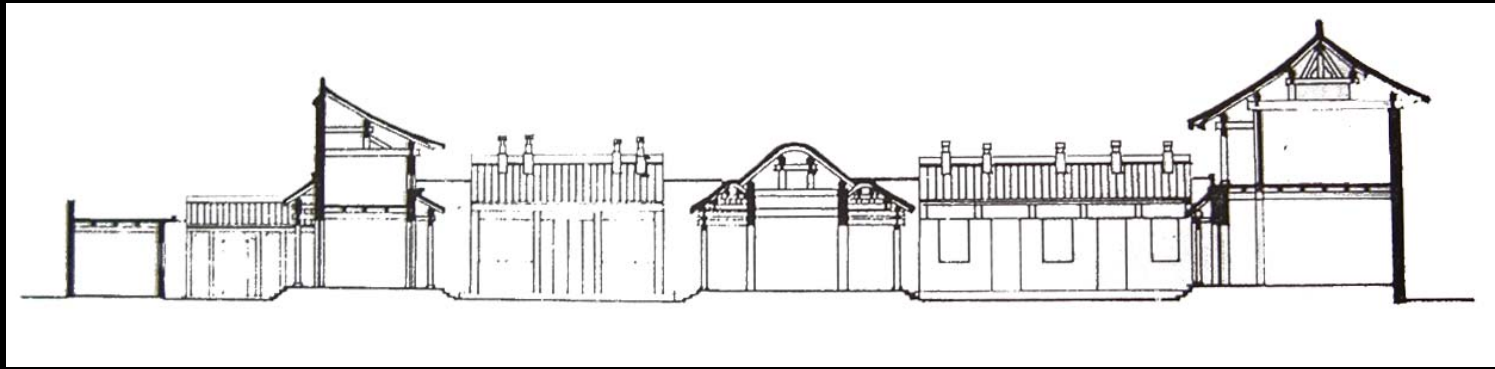
Section

DETAIL DESIGN

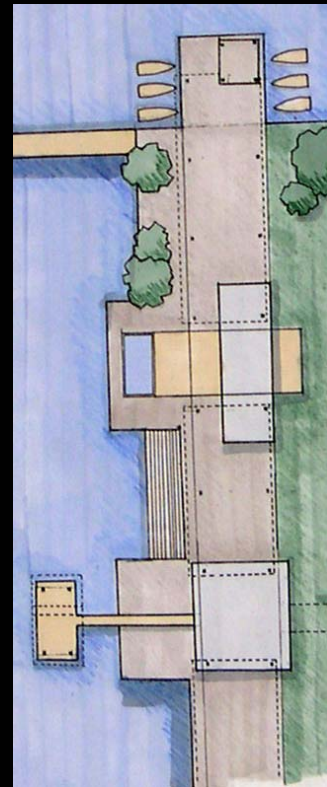
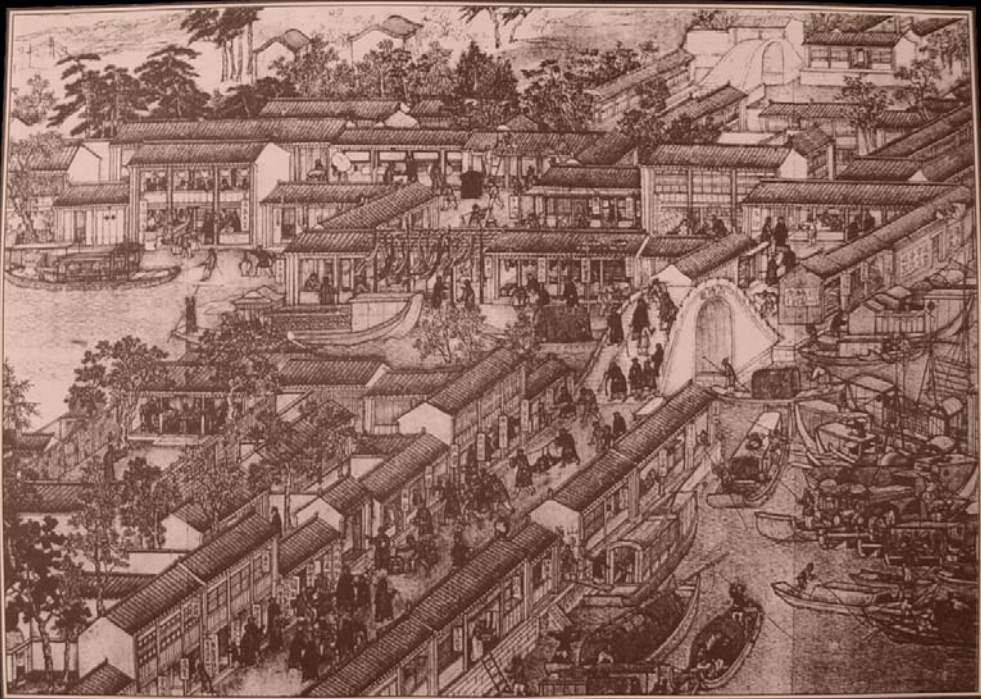
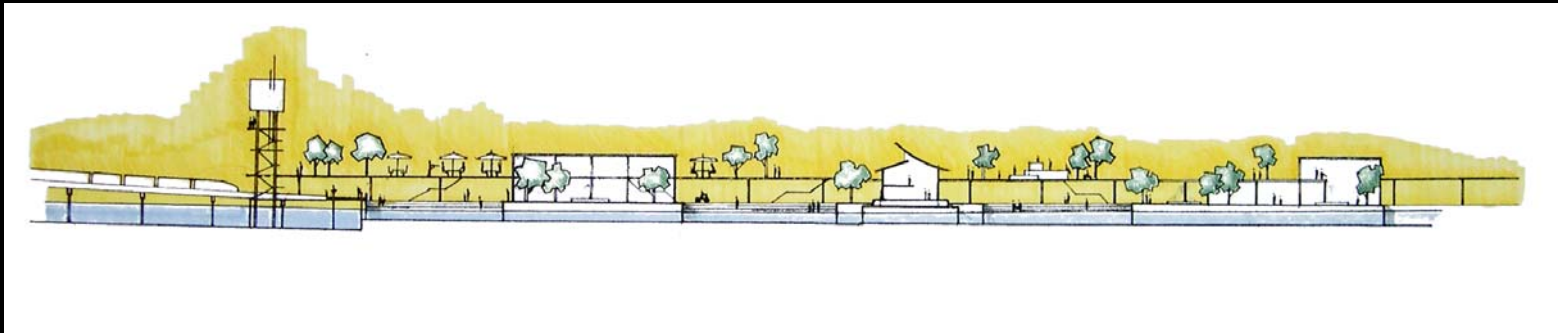




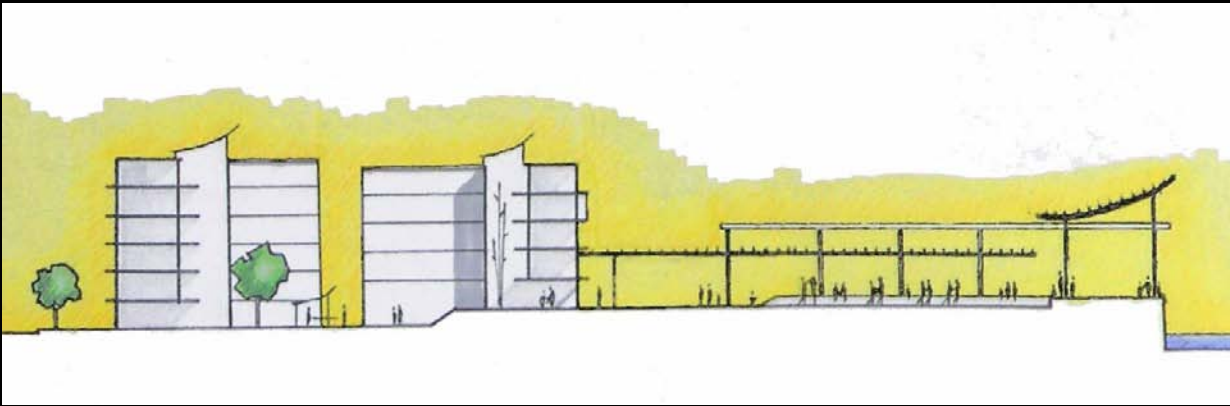
Residential



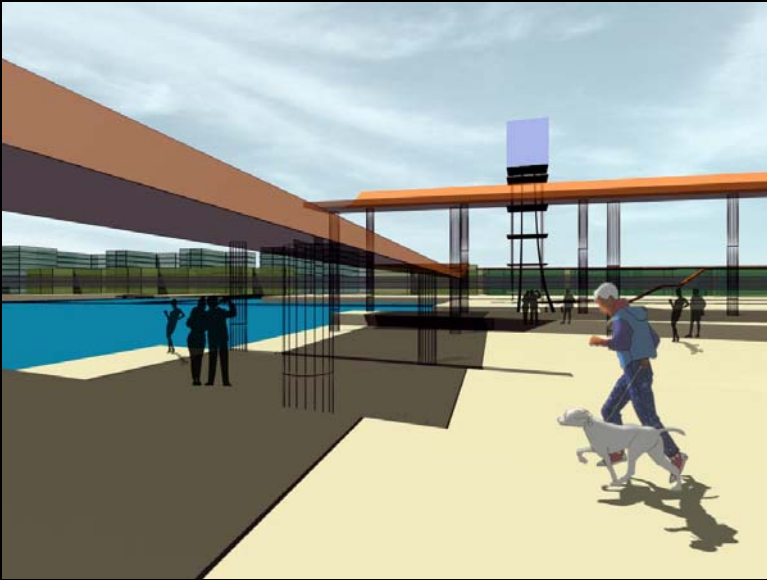
Residential



Commercial Waterfront



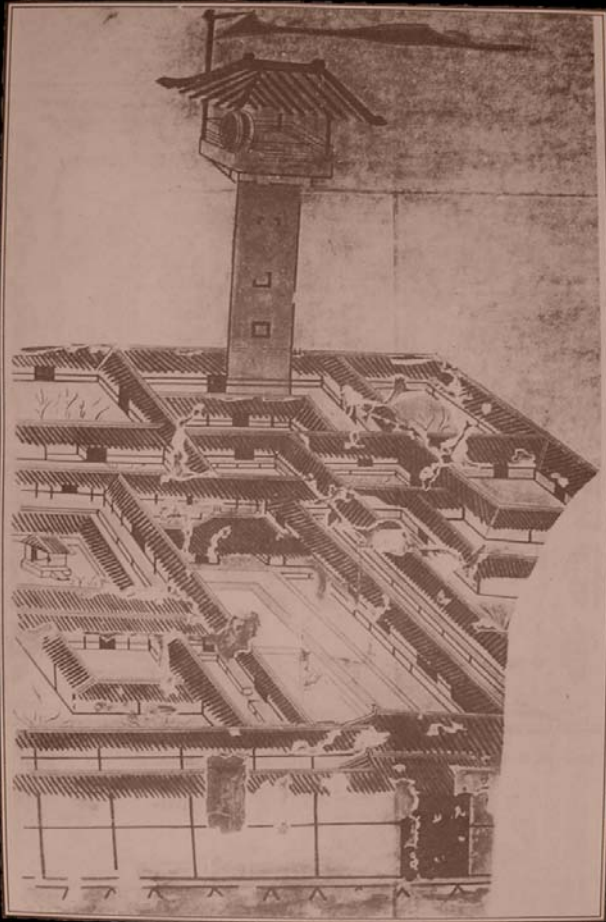
Public/Private Zones



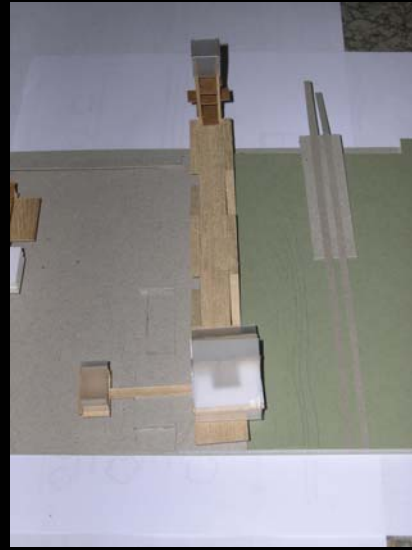
Light Rail

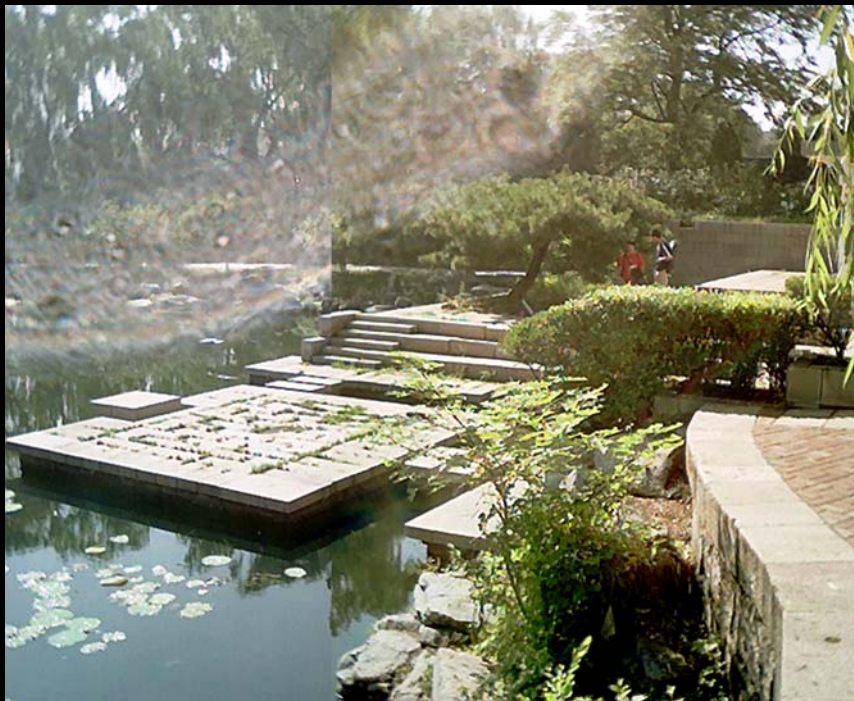


Bridges



Lookout Tower





Pavilions

