

# The Cold War

The USSR vs. the US



1955

- West Germany is now included in NATO
  - The Soviets establish the Warsaw Pact in response to this [Sakwa, 344]

## 1956

- Khrushchev's report to the 20th party congress [Sakwa, 344-45]:
  - Who will win out over whom?
  - “Either peaceful coexistence or the most destructive war in history. There is no third way...” [Sakwa, 344]
- Polish and Hungarian uprisings
  - Soviet troops go into Hungary
- Suez Crisis



Sputnik, 1957

This image is in the public domain. Source: [Wikimedia Commons](#).

## 1958

- Khrushchev takes over the post of Prime Minister from Bulganin. He now holds two positions (he is also first secretary of the Party) as Stalin did.
- Khrushchev begins sabre rattling about Berlin at the same time that he is angling for an invitation to visit the U.S.

## 1959

- Kitchen debate between Khrushchev and Nixon (July)
- Trip to the U.S. (Sept. 1959)
  - Corn and housing
  - Khrushchev wanted to see for himself why "agriculture, America's biggest success, [was] communism's biggest failure."

# Khrushchev-Nixon Kitchen Debate



This image is in the public domain. Source: [National Archives](#).



## 1960

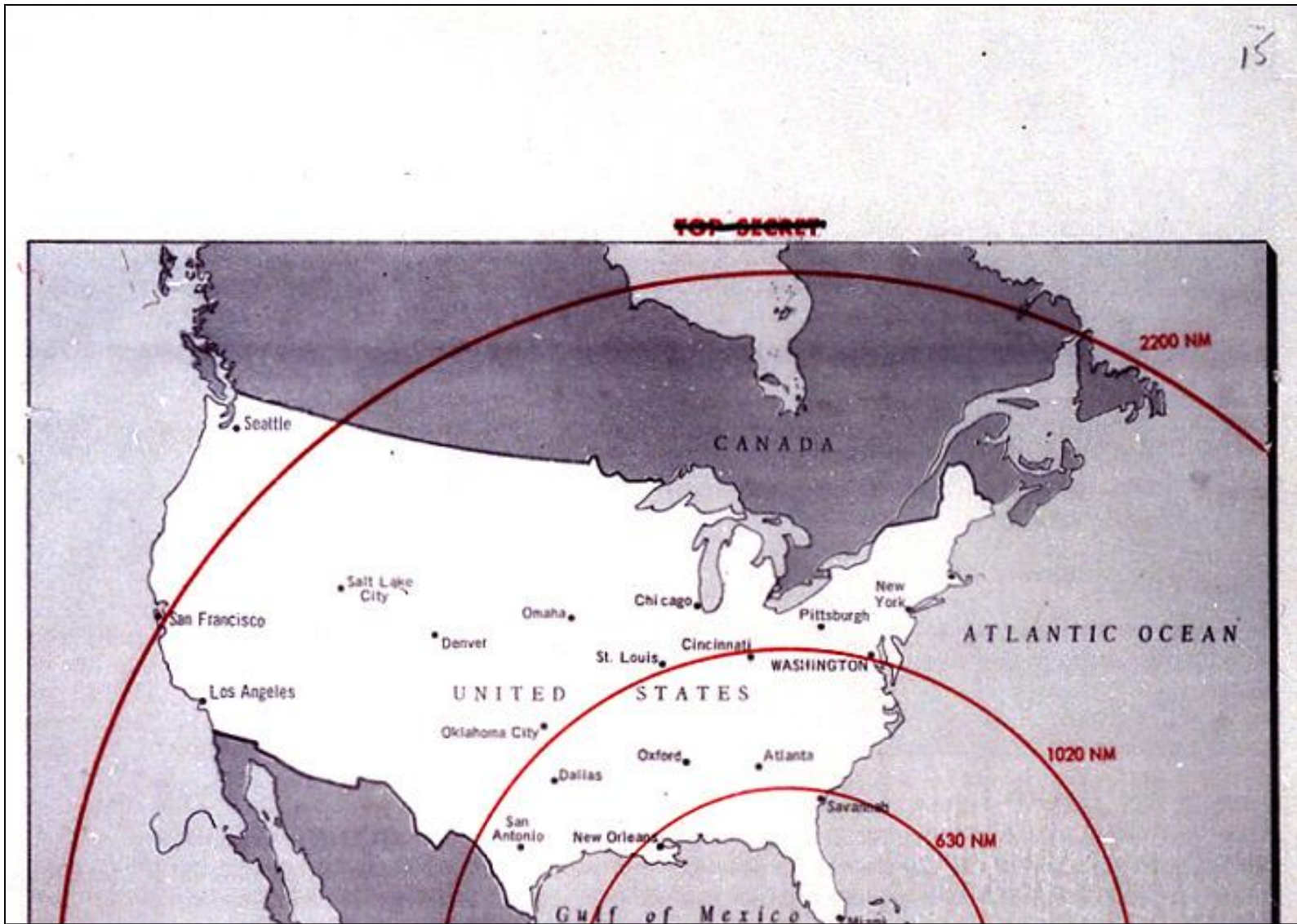
- Khrushchev announces the reduction of Soviet military forces by 1.2 million men in three years.
  - Growing dissatisfaction of top military leaders



This image is in the public domain. Source: [Wikimedia Commons](#).

## U2 Spy Plane, May Day 1960

13

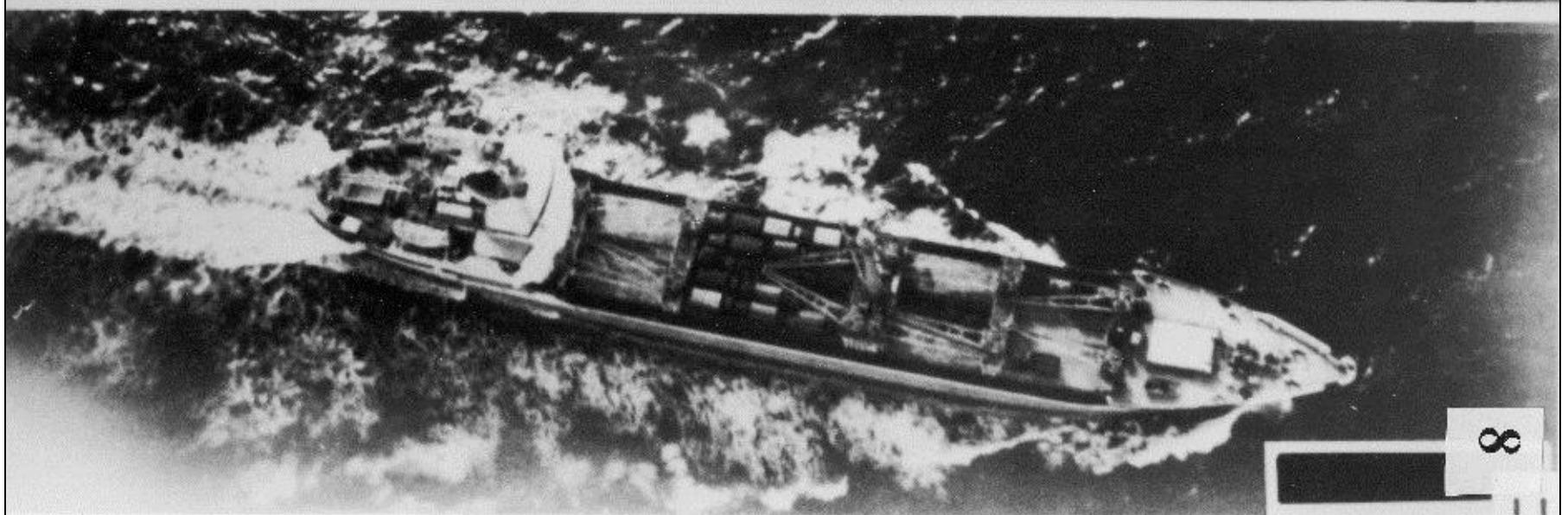
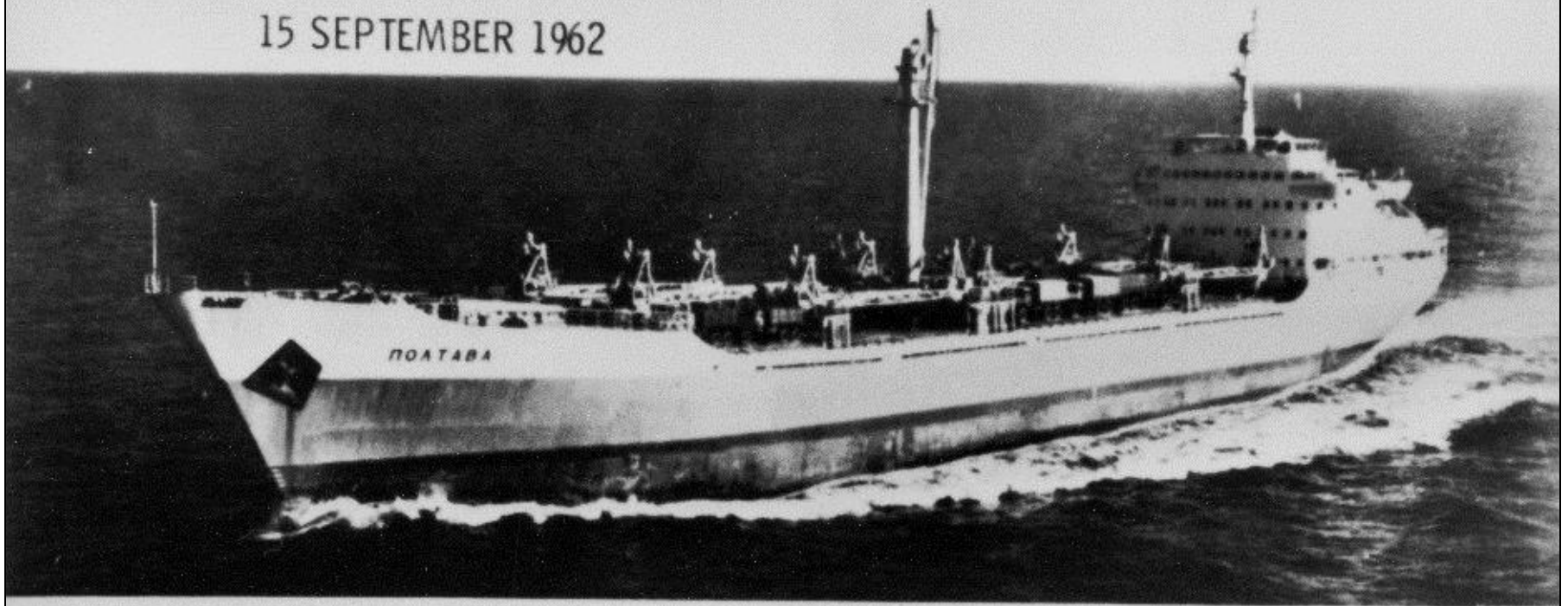


This image is in the public domain. Source: [Wikimedia Commons](#).

# The Cuban Missile Crisis, October 1962

SOVIET SHIP POLYAVA ENROUTE TO CUBA

15 SEPTEMBER 1962



This image is in the public domain. Source: [Wikimedia Commons](#).

# The Cuban Missile Crisis



© Source unknown. All rights reserved. This content is excluded from our Creative Commons license. For more information, see <https://ocw.mit.edu/help/faq-fair-use/>.

MIT OpenCourseWare  
<https://ocw.mit.edu>

21H.245J / 17.57J / 21G.086J Soviet and Post-Soviet Politics and Society, 1917 to the Present  
Spring 2016

For information about citing these materials or our Terms of Use, visit: <https://ocw.mit.edu/terms>.