

# 14.581 International Trade

Class notes on 2/25/2013<sup>1</sup>

## 1 Testing the Ricardian Model

- Given that Ricardo's model of trade is the first and simplest model of international trade it's surprising to learn that very little has been done to confront its predictions with the data
- As Deardorff (1984) points out, this is actually doubly puzzling:
  - As he puts it, a major challenge in empirical trade is to go from the Deardorff (1980) correlation ( $p^A.T \leq 0$ ) based on unobservable autarky prices  $p^A$  to some relationship based on observables.
  - So the name of the game is modeling  $p^A$  as a function of primitives (technology and tastes).
  - Doing so is trivial in a Ricardian model: relative prices are equal to relative labor costs, both in autarky and when trading.

### 1.1 What Has Inhibited Ricardian Empirics?

- Complete specialization: If the model is right then there are some goods that a trading country doesn't make at all.
  - Problem 1: this doesn't appear to be true in the data, at least at the level for which we usually have output or price data. (Though some frontier data sources offer exceptions.)
  - Problem 2: if you did find a good that a country didn't produce (as the theory predicts you should), you then have a 'latent variable' problem: if a good isn't produced then you can't know what that good's relative labor cost of production is.
- A fear that relative labor costs, as recorded in international data, are not really comparable across countries.
  - See Bernard and Jones (1996) and later comment/reply.
- A fear that relative labor costs are endogenous (to trade flows).

---

<sup>1</sup>The notes are based on lecture slides with inclusion of important insights emphasized during the class.

- Leamer and Levinsohn (1995): “the one-factor model is a very poor setting in which to study the impacts of technologies on trade flows, because the one-factor model is just too simple.”
  - Put another way, we know that labor’s share is not always and everywhere one, so why would you ignore the other factors of production? (Though as we shall see next week, for an interesting two-factor model to drive the pattern of trade we need: sectors to utilize more than one factor, *and* for these sectors to *differ* in their factor intensities.)
  - One possible reply: perhaps the other factors of production are very tradable and labor is not.
- A sense that the Ricardian model is incomplete because it doesn’t say where relative labor costs come from.
- Probably the fundamental inhibition: Hard to know what is the right test or specification to estimate without being “ad-hoc”:
  - As discussed in lecture 2, generalizing the theoretical insights of a 2-country Ricardian model to a realistic multi-country world is hard (and has only been done to limited success).
  - As we will see shortly, many researchers have run regressions that take the intuition of a 2-country Ricardian model and translate this into a multi-country regression.
  - But because these regressions didn’t follow directly from any general Ricardian model they couldn’t be considered as a true test of the Ricardian model.

## 2 ‘Ad-hoc’ tests

### 2.1 Early Tests of the Ricardian Model

- MacDougall (1951) made use of newly available comparative productivity measures (for the UK and the USA in 1937) to ‘test’ the intuitive prediction of Ricardian (aka: “comparative costs”) theory:
  - If there are 2 countries in the world (eg UK and USA) then each country will “export those goods for which the ratio of its output per worker to that of the other country exceeds the ratio of its money wage rate to that of the other country.”

- This statement is not necessarily true in a Ricardian model with more than 2 countries (and even in 1937, 95% of US exports went to places other than the UK). But that didn't deter early testers of the Ricardian model.
- MacDougall (1951) plots relative labor productivities (US:UK) against relative exports to the entire world (US:UK).
  - $2 \times 2$  Ricardian intuition suggests (if we're prepared to be very charitable) that this should be upward-sloping.
  - But note that even this simple intuition says nothing about *how much* a country will export.

### 2.1.1 MacDougall (1951) Results

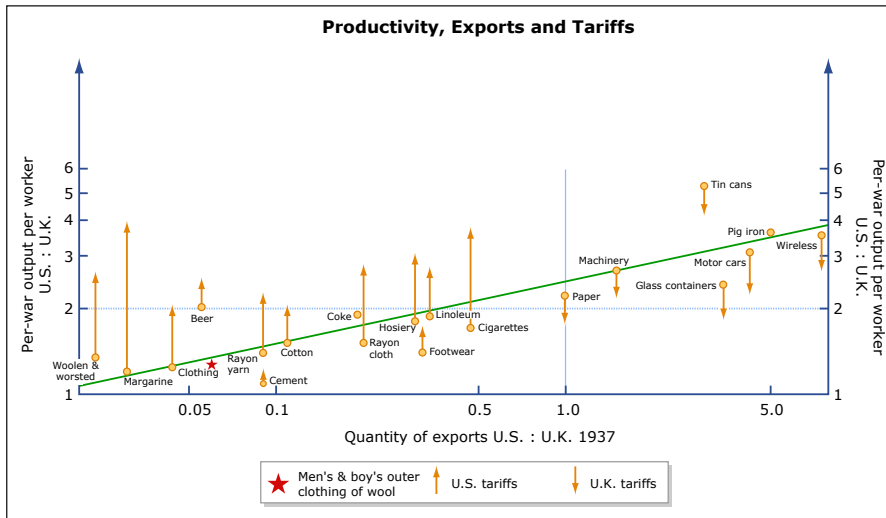


Image by MIT OpenCourseWare.

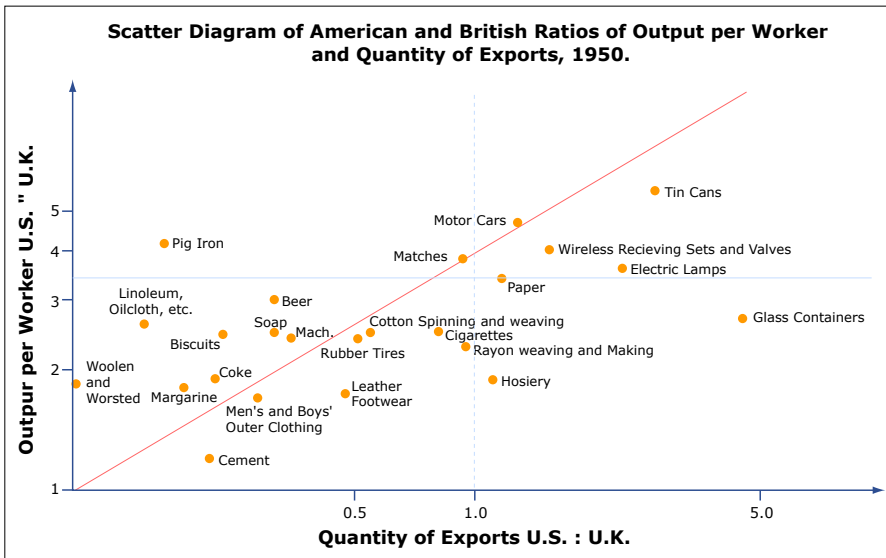


Image by MIT OpenCourseWare.

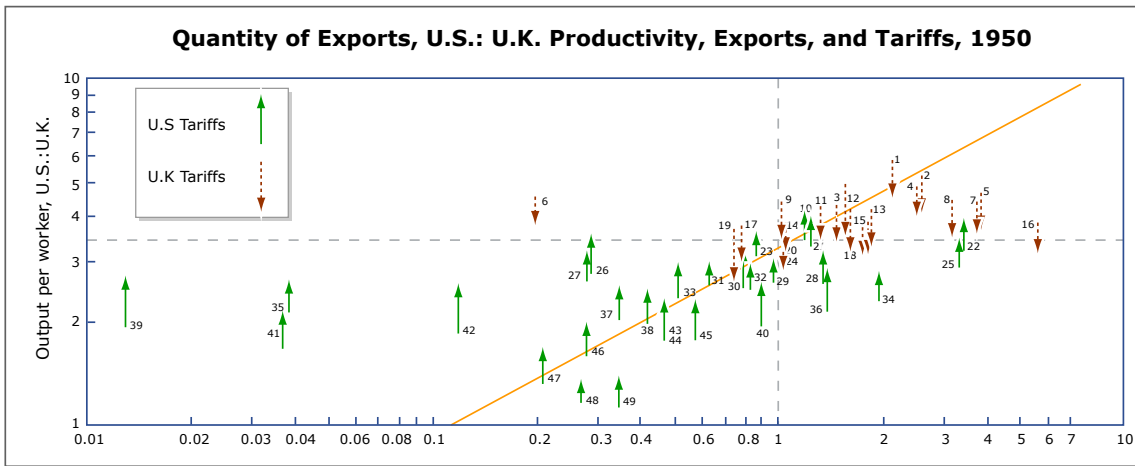


Image by MIT OpenCourseWare.

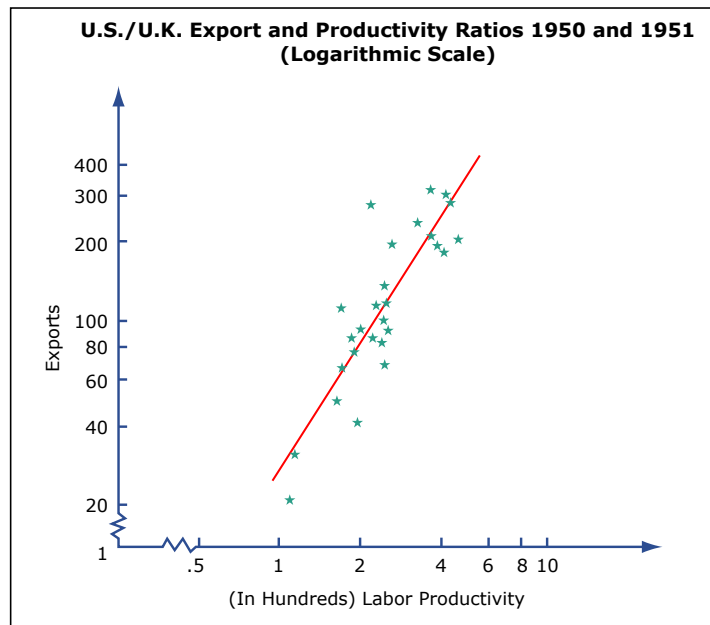


Image by MIT OpenCourseWare.

## 2.2 Golub and Hsieh (2000) I

- An update of MacDougall (1951)—or Stern (1962) or Balassa (1963)—to modern data.
- To fix ideas, suppose we are interested in testing the Ricardian model by comparing the US to the UK, as MacDougall did. (GH also compare the US to 6 other big OECD countries.)
- Suppose also (for now) that we only have one year of data (as MacDougall did).

- GH run regressions of the following form across industries  $k$ :

$$\begin{aligned}\log\left(\frac{X_{US}^k}{X_{UK}^k}\right) &= \alpha_1 + \beta_1 \log(a_{US}^k/a_{UK}^k) + \varepsilon_1^k, \\ \log\left(\frac{X_{US \rightarrow UK}^k}{M_{US \leftarrow UK}^k}\right) &= \alpha_2 + \beta_2 \log(a_{US}^k/a_{UK}^k) + \varepsilon_2^k.\end{aligned}$$

- GH run regressions of the following form across industries  $k$ :

$$\begin{aligned}\log\left(\frac{X_{US}^k}{X_{UK}^k}\right) &= \alpha_1 + \beta_1 \log(a_{US}^k/a_{UK}^k) + \varepsilon_1^k, \\ \log\left(\frac{X_{US \rightarrow UK}^k}{M_{US \leftarrow UK}^k}\right) &= \alpha_2 + \beta_2 \log(a_{US}^k/a_{UK}^k) + \varepsilon_2^k.\end{aligned}$$

- Here  $X_{US}^k$  is the US's total exports of good  $k$ , whereas  $X_{US \rightarrow UK}^k$  is US exports to the UK in good  $k$  (and US imports from UK are  $M_{US \leftarrow UK}^k$ ).
- The coefficient of interest is  $\beta$ .
  - The intuition of the Ricardian model suggests that  $\beta_1 > 0$  and  $\beta_2 > 0$ .
  - But there is no explicit multi-country Ricardian model that would generate this estimating equation. So it is hard to know how to interpret this test.

Comments:

1. They also have a time series of this data for many years (from 1972-91):
  - So they run this regression separately for each year, restricting the coefficients  $\alpha$  and  $\beta$  to be the same across each year's regression.
  - They also apply a SUR technique to improve efficiency.
2. Measuring  $a_{US}^k$  and  $a_{UK}^k$  is harder than it sounds:
  - One is in Dollars per hour and the other is in Sterling per hour.
  - Market exchange rates are likely to be misleading (failure of PPP in short-run).
  - So 'PPP exchange rates' are used instead. This is where international agencies collect price data for supposedly identical products (eg Big Macs) across countries and use these price observations to try to get things in real units (eg Big Macs per hour).
  - GH use three different PPP measures: 'Unadjusted' (same PPP in each sector) is surely wrong. 'ICP' (the Penn World Tables's PPP) is better, but has problem that these are *expenditure* PPPs. 'ICOP PPP' is probably best.

**Relative exports<sup>1</sup> and Relative Productivity<sup>2</sup>, for 39 Manufacturing Sectors**

	Period	Unadjusted		ICP PPP		ICOP PPP	
		$\beta_{jk}$	$R^2$	$\beta_{jk}$	$R^2$	$\beta_{jk}$	$R^2$
US-Japan	84-90	0.33 (3.03) <sup>3</sup>	0.22	0.31 (2.96) <sup>3</sup>	0.20	0.30 (2.80) <sup>3</sup>	0.18
US-Germany	77-91	0.18 (4.28) <sup>3</sup>	0.08	0.15 (3.55) <sup>3</sup>	0.07	0.15 (3.80) <sup>3</sup>	0.05
US-UK	79-91	0.09 (2.78) <sup>3</sup>	0.03	0.07 (2.45) <sup>3</sup>	0.02	0.23 (4.48) <sup>3</sup>	0.12
US-France	78-91	-0.19 (-3.50) <sup>4</sup>	0.03	-0.24 (-3.92) <sup>4</sup>	0.06	0.09 (1.96) <sup>3</sup>	0.03
US-Italy	78-91	0.36 (5.48) <sup>3</sup>	0.09	0.37 (6.25) <sup>3</sup>	0.13	—	—
US-Canada	72-90	0.21 (5.29) <sup>3</sup>	0.01	0.27 (6.26) <sup>3</sup>	0.04	—	—
US-Australia	81-91	0.16 (2.27) <sup>3</sup>	0.04	0.31 (3.52) <sup>3</sup>	0.10	—	—

Note:  $\log(X_{ij} / X_{jk}) = \alpha_{jk1} + \beta_{jk1} \log(\alpha_{jk} / \alpha_{ij})_{-1} + \varepsilon_{ijk1}$  estimated by seemingly unrelated regressions. t-statistics in parentheses, calculated from heteroskedasticity-consistent (White) standard errors.

<sup>1</sup>Log of US divided by other country exports.

<sup>2</sup>Log of US relative to other productivity.

<sup>3</sup>The coefficient is significant at 1% level with the correct sign.

<sup>4</sup>The coefficient is significant at 1% level with incorrect sign.

Image by MIT OpenCourseWare.

**Bilateral Trade Balances<sup>1</sup> and Relative Productivity<sup>2</sup>, for 21 Manufacturing Sectors**

	Period	Unadjusted		ICP PPP		ICOP PPP	
		$b_{jk}$	$R^2$	$b_{jk}$	$R^2$	$b_{jk}$	$R^2$
US-Japan	84-91	0.14 (2.07) <sup>3</sup>	0.09	0.20 (2.68) <sup>3</sup>	0.10	0.43 (2.99) <sup>3</sup>	0.25
US-Germany	77-90	0.46 (8.71) <sup>3</sup>	0.06	0.83 (17.03) <sup>3</sup>	0.11	0.07 (1.32)	0.05
US-UK	79-90	-0.08 (-2.93) <sup>4</sup>	0.03	-0.02 (-1.41)	0.02	-0.01 (-0.06)	0.02
US-France	78-90	-0.21 (-7.97) <sup>4</sup>	0.02	0.02 (0.52)	0.02	0.05 (2.70) <sup>3</sup>	0.02
US-Italy	79-89	0.26 (7.11) <sup>3</sup>	0.11	0.25 (7.55) <sup>3</sup>	0.01	—	—
US-Canada	72-89	0.41 (37.44) <sup>3</sup>	0.02	0.73 (77.15) <sup>3</sup>	0.01	—	—
US-Australia	81-91	0.72 (5.75) <sup>3</sup>	0.05	0.89 (7.13) <sup>3</sup>	0.10	—	—
US-Korea	72-90	-0.64 (-11.17) <sup>4</sup>	0.02	-0.12 (-6.71) <sup>4</sup>	0.02	0.93 (36.88) <sup>3</sup>	0.18
US-Mexico	80-90	0.46 (6.12) <sup>3</sup>	0.14	0.31 (4.21) <sup>3</sup>	0.10	0.56 (7.50) <sup>3</sup>	0.18

Note:  $\log(X_{ijk} / M_{jk}) = \alpha_{jk3} + \beta_{jk3} \log(\alpha_{jk} / \alpha_{ij})_{-1} + \varepsilon_{ijk3}$  estimated by seemingly unrelated regressions. t-statistics in parentheses, based on heteroskedasticity-consistent (White) standard errors.

<sup>1</sup>Log of the ratio of bilateral exports to bilateral imports.

<sup>2</sup>Log of US relative to other productivity.

<sup>3</sup>The coefficient is significant at 1% level with the correct sign.

<sup>4</sup>The coefficient is significant at 1% level with incorrect sign.

Image by MIT OpenCourseWare.

## Discussion of GH (2000) and MacDougall (1951)

- Results in MacDougall (1951) and GH (2000) broadly supportive of Ricardian model. But problems remain:
  1. Bhagwati (1963): Ricardian theory doesn't necessarily predict relationships like these.
  2. Deardorff (1984): HO model (without FPE) would predict a relationship like this too.

3. Harrigan (2003): Simple partial equilibrium supply-and-demand models predict this relationship too. “A truly GE prediction of Ricardian models is that a productivity advantage in one sector can actually *hurt* export success in another sector, but GH do not investigate this prediction [and nor has anyone since.]”
  4. Harrigan (2003): A test of a trade model needs to have a plausible alternative hypothesis built in which can be explicitly tested (and perhaps rejected).
- Subsequent work (which we will discuss shortly) has tackled ‘Problem 1’, but not ‘Problems 2-4.’

### 2.3 Nunn (2007)

- Open question in Ricardian model: where do labor cost (ie productivity) differences come from?
  - Relatedly, in an empirical setting: are we prepared to assume that productivity differences are exogenous with respect to trade flows?
- Nunn (2007) took an innovative take on this problem.
  - (But this paper does not try to tackle the fundamental ‘Problems 1-4’ of Ricardian model-based empirical work highlighted above.)
- Nunn (2007) is an influential paper in the ‘Trade and Institutions’ literature (really: How Institutions  $\Rightarrow$  Trade; a separate literature considers the reverse).
  - As we saw in the previous lecture, this literature argues that institutional differences across countries do not just have aggregate productivity consequences (as in AJR 2001), but may also have *differential* productivity differences across industries within countries (industries may differ in their ‘institutional intensity’).
  - If that is true, institutional differences should generate scope for comparative advantage, and hence trade.

#### 2.3.1 Set-up

- The key intuition was seen in Lecture 2:

- With imperfect contract enforcement (‘bad courts’) input suppliers who make relationship-specific inputs will under-invest ex ante in fear of ex post hold-up.
- This harms productivity. And it is worse in industries that are particularly-dependent on relationship-specific inputs, and in countries with bad courts.
- Suppose further that productivity (in country  $i$  and industry  $k$ ) is the simple product of the ‘relationship-specific input intensity’ of the industry,  $z^k$ , and the quality of the country’s legal system,  $Q_i$ .
- Then we have an institutional microfoundation for each country and industry’s productivity level:  $a_i^k = z^k \times Q_i$ .

### 2.3.2 Empirical specification

- Based on this logic, Nunn (2007) estimates the following regression, which is similar to Golub and Hsieh (2000)’s regression 1:

$$\ln x_i^k = \alpha^k + \alpha_i + \beta_1 z^k Q_i + \beta_2 h^k H_i + \beta_3 k^k K_i + \varepsilon_i^k$$

- $x$  is total exports and  $\alpha^k$  and  $\alpha_i$  are industry and country fixed effects.
  - The inclusion of  $\alpha_k$  is the same thing as taking differences across countries (like the US-UK comparison that GH did) and pooling all of these pairwise comparisons.
- While the regressor of interest is  $z^k Q_i$ , Nunn controls for Heckscher-Ohlin-style effects by including an interaction between industry-level skill-intensity ( $h^k$ ) and country-level skill endowments ( $H_i$ ), and similarly for capital.

### 2.3.3 Is this regression justified by theory?

- Nunn appeals to Romalis (AER, 2004) which derived an expression like this from theory.
  - Romalis (2004) is a Heckscher-Ohlin model with monopolistic competition and trade costs, so FPE is broken.
  - One problem with that is that Romalis doesn’t explicitly have ‘technology’ terms (like  $z^k Q_i$ ) in his regression, though Morrow (2008) derives a version with these included.



- A second problem with this appeal to Romalis (2004) is that the model is effectively a two-country model, so it’s not clear whether an expression like this holds in a multi-country (and zero trade costs) world.
- Costinot (2009) provides a justification for the regression if the human and physical capital terms are left out.
  - Note that by assumption,  $a_i^k = z^k Q_i$ . So  $a_i^k$  is log supermodular and everything in Costinot (2009) applies.

### 2.3.4 Where is the data on $z^k$ and $Q_i$ ?

- $z^k$  (industry-level ‘relationship-specific input intensity’):
  - Nunn follows Rajan and Zingales (AER, 1998) and assumes that the US is a ‘model technology’ country. So data from the US can shed light on the innate nature of the technology of making good  $k$ , which works (by assumption) in all countries.
  - Nunn uses  $z^k = \sum_j \theta_j^k R_{neither}^k$ , where the sum is over all upstream supplying industries  $j$  to industry  $k$
  - $\theta_j^k$  is the share of industry  $k$ ’s total input choices sourced from industry  $j$  (according to US 1997 Input-Output Table)
  - $R_{neither}^k$  is a classification done by Rauch (1999) of whether good  $k$  is a good that is neither ‘sold on an organized exchange’ nor ‘reference priced in industry journals’ (ie it is more likely to be relationship-specific.)
- $Q_i$  (country-level ‘quality of legal system’):
  - Nunn uses standard measures from the World Bank (based on investors’ perceptions of judicial predictability and enforcement of contracts).

The Twenty Least and Twenty Most Contract Intensive Industries			
Least Contract intensive: lowest $z_i^{rs1}$		Most Contract intensive: highest $z_i^{rs1}$	
$z_i^{rs1}$	Industry Description	$z_i^{rs1}$	Industry Description
.024	Poultry processing	.810	Photographic and photocopying equip. manufacturing
.024	Flour milling	.819	Air and gas compressor manufacturing
.036	Petroleum refineries	.822	Analytical laboratory instr. manufacturing
.036	Wet corn milling	.824	Other engine equipment manufacturing
.053	Aluminum sheet, plate and foil manufacturing	.826	Other electronic component manufacturing
.058	Primary aluminum production	.831	Packaging machinery manufacturing
.087	Nitrogenous fertilizer manufacturing	.840	Book publishers
.099	Rice milling	.851	Breweries
.111	Prim. nonferrous metal excl. copper and alum.	.854	Musical instrument manufacturing
.132	Tobacco stemming and redrying	.872	Aircraft engine and engine parts manufacturing
.144	Other oilseed processing	.873	Electricity and signal testing instr. manufacturing
.171	Other gas extraction	.880	Telephone apparatus manufacturing
.173	Coffee and tea manufacturing	.888	Search, detection, and navig. instr. manufacturing
.180	Fiber, yarn, and thread mills	.891	Broadcast and wireless comm. equip. manufacturing
.184	Synthetic dye and pigment manufacturing	.893	Aircraft manufacturing
.190	Synthetic rubber manufacturing	.901	Other computer peripheral equip. manufacturing
.195	Plastic material and resin manufacturing	.904	Audio and video equip. manufacturing
.196	Phosphatic fertilizer manufacturing	.956	Electronic computer manufacturing
.200	Ferroalloy and related products manufacturing	.977	Heavy duty truck manufacturing
.200	Frozen food manufacturing	.980	Automobile and light truck manufacturing

The contract intensity measures reported are rounded from seven digits to three digits.

Image by MIT OpenCourseWare.

The Determinants of Comparative Advantage					
	(1)	(2)	(3)	(4)	(5)
Judicial quality interaction: $z_i Q_c$	.289** (.013)	.318** (.020)	.326** (.023)	.235** (.017)	.296** (.024)
Skill interaction: $h_i H_c$	–	–	.085** (.017)	–	.063** (.017)
Capital interaction: $k_i K_c$	–	–	.105** (.031)	–	.074 (.041)
Log income x value added: $va_i \ln y_c$	–	–	–	-.117* (.047)	-.137* (.067)
Log income x intra-industry trade: $ii_t \ln y_c$	–	–	–	.576** (.041)	.546** (.056)
Log income x TFP growth: $\Delta \ln y_c$	–	–	–	.024 (.033)	-.010 (.049)
Log credit/GDP x capital: $k_i CR_c$	–	–	–	.020 (.012)	.021 (.018)
Log income x input variety: $(1 - h_i) \ln y_c$	–	–	–	.446** (.075)	.522** (.103)
Country fixed effects	Yes	Yes	Yes	Yes	Yes
Industry fixed effects	Yes	Yes	Yes	Yes	Yes
$R^2$	.72	.76	.76	.77	.76
Number of observations	22,598	10,976	10,976	15,737	10,816

Dependent variable is  $\ln x_{ic}$ . The regressions are estimates of (1). The dependent variable is the natural log of exports in industry  $i$  by country  $c$  to all other countries. In all regressions the measure of contract intensity used is  $z_i^{rs1}$ . Standardized beta coefficients are reported, with robust standard errors in brackets, \* and \*\* indicate significance at the 5 and 1 percent levels.

Image by MIT OpenCourseWare.

### 2.3.5 Comments

- Interpreting the results:
  - Regression coefficients are standardized, so they can be compared directly with one another. Hence institution-driven comparative advantage appears to explain more of the world than HO CA.
  - But the partial  $R^2$  in these regressions is very low (3 % of the non-fixed effects variation can be explained by all regressors combined).

So there is lots more to do on explaining export specialization! (Or the specification was wrong and/or there is big time measurement error.)

- Nunn (2007) pursues a number of nice extensions:
  - Worry about endogeneity of  $Q_i$  so IV for it with legal origin (La Porta et al, 1997/1998).
  - Propensity score matching: restrict attention to British and French legal origin countries only. Then do matching on them (to control non-parametrically for observed confounders...but note that matching never helps to obviate concerns about omitted variable bias due to unobserved confounders).

IV Estimates Using Legal Origins as Instruments						
	OLS (1)	IV (2)	OLS (3)	IV (4)	OLS (5)	IV (6)
<b>OLS and second stage IV estimates: Dependent variable is <math>\ln x_{ic}</math>.</b>						
Judicial quality interaction: $zQ_c$	.289** (.013)	.385** (.022)	.326** (.023)	.539** (.044)	.296** (.024)	.520** (.046)
Skill interaction: $hH_c$			.085** (.017)	.042* (.019)	.063** (.017)	.023 (.019)
Capital interaction: $kK_c$			.105** (.031)	.183** (.035)	.074 (.041)	.114** (.043)
Full set of control variables	No	No	No	No	Yes	Yes
Country fixed effects	Yes	Yes	Yes	Yes	Yes	Yes
Industry fixed effects	Yes	Yes	Yes	Yes	Yes	Yes
$R^2$	.72	.72	.76	.76	.76	.76
Number of observations	22,598	22,598	10,976	10,976	10,816	10,816
<b>First stage IV estimates: Dependent variable is <math>z_i Q_c</math>.</b>						
British legal origin: $z\beta_c$		-.295** (.033)		-.210** (.038)		-.215** (.036)
French legal origin: $zF_c$		-.405** (.025)		-.304** (.030)		-.298** (.028)
German legal origin: $zG_c$		-.072 (.045)		-.072 (.051)		-.088 (.049)
Socialist legal origin: $zS_c$		-.477** (.035)				
F-test		113.1		74.6		60.4
Hausman test (p-value)		.00		.00		.00
Over-id test (p-value)		.00		.00		.00

In the second stage standardized beta coefficients are reported, with robust standard errors in brackets. The dependent variable is the natural log of exports in industry  $i$  by country  $c$  to all other countries. In the first stage I report regular coefficients, with robust standard errors clustered at the country level reported in brackets. The dependent variable is the judicial quality interaction  $zQ_c$ . The measure of contract intensity used is  $z_i^{int}$ . Although all explanatory variables in the second stage are also included in the first stage, to conserve space I do not report the first stage coefficients for these variables. The omitted legal origin category is Scandinavian. Because there are no Socialist legal origin countries in the smaller samples of columns (3)-(5), the Socialist interaction term does not appear as an instrument in these specifications. The reported F-test is for the null hypothesis that the coefficients for the interaction terms are jointly equal to zero, \* and \*\* indicate significance at the 5 and 1 percent levels.

Image by MIT OpenCourseWare.

### 2.3.6 Similar Ricardian-style Exercises

- A number of other papers pursue similar empirical set-ups to that in Nunn (2007):
  - Cunat-Melitz: industry-level volatility  $\times$  country-level labor market institutions.
  - Costinot (JIE, 2009): industry-level job complexity  $\times$  country-level human capital.
  - Levchenko (ReStud, 2007): industry-level complexity  $\times$  country-level contracting institutions.

- Manova (2008): industry-level financial dependence  $\times$  country-level financial depth.
- Chor (2009): (roughly) all of the above in one regression, plus H-O variables (“The Determinants of Comparative Advantage”).
- Nunn and Trefler (2013) survey the ‘trade and institutions’ literature.

### 3 Costinot, Donaldson and Komunjer (2012)

- As we have discussed in previous lecture, EK (2002) leads to closed-form predictions about the total volume of trade, but it remains silent about central Ricardian question: Who produces/exports what to whom, i.e. What is the pattern of trade?
- CDK extend EK (2002) in a number of empirically-relevant dimensions in order to bring the Ricardian model closer to the data:
  - Multiple industries:
    - \* Now the model says nothing about which varieties within an industry get traded: fundamental EK-style indeterminacy moves ‘down’ a level.
    - \* But the model does predict *aggregate* industry trade flows.
    - \* These industry-level aggregate trade flow predictions have a very Ricardian feel. These predictions are the core of the paper.
  - Also, an extension that weakens the assumption behind EK 2002’s clever choice of within-industry productivity distribution.

#### Contribution

- The result goes beyond the preceding Ricardian literature we’ve seen (eg MacDougall (1951), Golub and Hsieh (2000), and Nunn (2007)):
  - Provides theoretical justification for the regression being run. This not only relaxes the minds of the critics, but also adds clarity: it turns out that (according to the Ricardian model) no one was running the right regression before.
  - Model helps us to discuss what might be in the error term and hence whether orthogonality restrictions sound plausible.
  - Empirical approach explicitly allows (and attempts to correct) for Deardorff (1984)’s selection problem of unobserved productivities.

- Explicit GE model allows proper quantification: How important is Ricardian CA for welfare (given the state of the productivity differences and trade costs in the world we live in)?

### 3.1 A Ricardian Environment

- Essentially: a multi-industry Eaton and Kortum (2002) model.
- Many countries indexed by  $i$ .
- Many goods indexed by  $k$ .
  - Each comprised of infinite number of varieties,  $\omega$ .
- One factor ('labor'):
  - Freely mobile across industries but not countries.
  - In fixed supply  $L_i$ .
  - Paid wage  $w_i$ .

#### 3.1.1 Assumption 1: Technology

- Productivity  $z_i^k(\omega)$  is a random variable drawn independently for each triplet  $(i, k, \omega)$
- Drawn from a Fréchet distribution  $F_i^k(\cdot)$ :

$$F_i^k(z) = \exp[-(z/z_i^k)^{-\theta}]$$

- Where:
  - $z_i^k > 0$  is location parameter we refer to as 'fundamental productivity'. Heterogeneity in  $z_i^k$  generates scope for cross-industry Ricardian comparative advantage. This 'level' of CA is the focus of CDK (2011).
  - $\theta > 1$  is intra-industry heterogeneity. Generates scope for intra-industry Ricardian comparative advantage. This 'level' of CA is the focus of EK (2002).

### 3.1.2 Assumption 2: Trade Costs

- Standard iceberg formulation:
  - For each unit of good  $k$  shipped from country  $i$  to country  $j$ , only  $1/d_{ij}^k \leq 1$  units arrive.
  - Normalize  $d_{ii}^k = 1$
  - Assume:  $d_{il}^k \leq d_{ij}^k \cdot d_{jl}^k$

### 3.1.3 Assumption 3: Market Structure

- Perfect competition:
  - In any country  $j$  price  $p_j^k(\omega)$  paid by buyers of variety  $\omega$  of good  $k$  is:
 
$$p_j^k(\omega) = \min_i [c_{ij}^k(\omega)]$$
  - Where  $c_{ij}^k(\omega) = \frac{d_{ij}^k w_i}{z_i^k(\omega)}$  is the cost of producing and delivering one unit of this variety from country  $i$  to country  $j$ .
- Comment: paper also develops case or Bertrand competition.
  - This builds on the work of Bernard, Eaton, Jensen and Kortum (2003)
  - Here, the price paid is the *second*-lowest price (but the identity of the seller is the seller with the lowest price).
  - This alteration doesn't change any of the results that follow, because the distribution of markups is fixed in BEJK (2003).

### 3.1.4 Assumption 4: Preferences

- Cobb-Douglas upper-tier (across goods), CES lower-tier (across varieties within goods):
  - Expenditure given by:

$$x_j^k(\omega) = [p_j^k(\omega) / p_j^k]^{1-\sigma_j^k} \cdot \alpha_j^k w_j L_j$$

- Where  $0 \leq \alpha_j^k \leq 1$ ,  $\sigma_j^k < 1 + \theta$

– And  $p_j^k \equiv \left[ \int_{\omega' \in \Omega} p_j^k(\omega')^{1-\sigma_j^k} \right]^{1/(1-\sigma_j^k)}$  is the typical CES price index.

- Comment: assumption on upper-tier is not necessary for main Ricardian prediction (Theorem 3 below); can have *any* upper-tier utility function.

### 3.1.5 Assumption 5: Trade Balance

- For any country  $i$ , trade is balanced:

$$\sum_{j=1}^I \sum_{k=1}^K \pi_{ij}^k \alpha_j^k \gamma_j = \gamma_i$$

–  $\gamma_i \equiv w_i L_i / \sum_{i'=1}^I w_{i'} L_{i'}$  is the share of country  $i$  in world income.

- Comment: like with most trade models, the key thing is just that the TB is exogenous, not that it's fixed at zero.

## 3.2 Theoretical Predictions: 2 Types

1. Cross-sectional predictions:

- How productivity ( $z_i^k$ ) affects trade flows ( $x_{ij}^k$ ) within any given equilibrium.
- These relate to previous Ricardian literature (e.g. Golub and Hsieh, 2000).
- Testable in any cross-section of data.

2. Counterfactual predictions:

- How productivity changes affect trade flows and welfare across equilibria.
- Used to inform GE response of economy to a counterfactual scenario.
- Our scenario of interest: a world without cross-industry Ricardian trade, which we explore in order to shed light on the ‘importance’ (eg for welfare) of Ricardian forces for trade.

### 3.3 Cross-Sectional Predictions

**Lemma 1.** *Suppose that Assumptions A1-A4 hold. Let  $x_{ij}^k$  be the value of trade from  $i$  to  $j$  in industry  $k$ . Then for any importer,  $j$ , any pair of exporters,  $i$  and  $i'$ , and any pair of goods,  $k$  and  $k'$ ,*

$$\ln \left( \frac{x_{ij}^k x_{i'j}^{k'}}{x_{ij}^{k'} x_{i'j}^k} \right) = \theta \ln \left( \frac{z_i^k z_{i'}^{k'}}{z_i^{k'} z_{i'}^k} \right) - \theta \ln \left( \frac{d_{ij}^k d_{i'j}^{k'}}{d_{ij}^{k'} d_{i'j}^k} \right).$$

where  $\theta > 0$ .

- Proof: model delivers a ‘gravity equation’ for trade flows and pair of countries  $i, j$  in each industry  $k$ . Take differences twice.

$$x_{ij}^k = \frac{(w_i d_{ij}^k / z_i^k)^{-\theta}}{\sum_{i'} (w_{i'} d_{i'j}^k / z_{i'}^k)^{-\theta}} \cdot \alpha_j^k w_j L_j$$

- Difficulty of taking Lemma 1 to data:
  - ‘Fundamental Productivity’ ( $z_i^k$ ) is not observed (except in autarky). This is  $z_i^k = E[z_i^k(\omega)]$ .
  - Instead we can only hope to observe ‘Observed Productivity’,  $\tilde{z}_i^k \equiv E[z_i^k(\omega) | \Omega_i^k]$ , where  $\Omega_i^k$  is set of varieties of  $k$  that  $i$  actually produces.
  - This is Deardorff’s (1984) selection problem working at the level of varieties,  $\omega$ .

- CDK show that:

$$\frac{\tilde{z}_i^k}{\tilde{z}_i^{k'}} = \left( \frac{z_i^k}{z_i^{k'}} \right) \cdot \left( \frac{\pi_{ii}^k}{\pi_{ii}^{k'}} \right)^{-1/\theta}$$

- Intuition: more open economies (lower  $\pi_{ii}^k$ ’s) are able to avoid using their low productivity draws by importing these varieties.
- This solves the selection problem, but only by extrapolation due to a functional form assumption.

**Theorem 2.** *Suppose that Assumptions A1-A4 hold. Then for any importer,  $j$ , any pair of exporters,  $i$  and  $i'$ , and any pair of goods,  $k$  and  $k'$ ,*

$$\ln \left( \frac{\tilde{x}_{ij}^k \tilde{x}_{i'j}^{k'}}{\tilde{x}_{ij}^{k'} \tilde{x}_{i'j}^k} \right) = \theta \ln \left( \frac{\tilde{z}_i^k \tilde{z}_{i'}^{k'}}{\tilde{z}_i^{k'} \tilde{z}_{i'}^k} \right) - \theta \ln \left( \frac{d_{ij}^k d_{i'j}^{k'}}{d_{ij}^{k'} d_{i'j}^k} \right),$$

where  $\tilde{x}_{ij}^k \equiv x_{ij}^k / \pi_{ii}^k$ .



- Note that (if trade costs take the form  $d_{ij}^k = d_{ij}d_j^k$ ) then this has a very similar feel to the standard  $2 \times 2$  Ricardian intuition.
  - But standard  $2 \times 2$  Ricardian model doesn't usually specify trade quantities like Theorem 3 does.
  - And the Ricardian model here makes this same  $2 \times 2$  prediction for each export destination  $j$ .

- Can also write this in 'gravity equation' form:

$$\ln \tilde{x}_{ij}^k = \gamma_{ij} + \gamma_j^k + \theta \ln \tilde{z}_i^k - \theta \ln d_{ij}^k$$

- This derivation answers a lot of questions implicitly left unanswered in the previous Ricardian literature:
  - Should the dependent variable be  $x_i^k$  or something else?
  - How do we average over multiple country-pair comparisons (ie what to do with the  $j$ 's)?
  - How do we interpret the regression structurally (ie, What parameter is being estimated)?
  - What fixed effects should be included?
  - Should we estimate the relationship in levels, logs, semi-log?
  - What is in the error term? (Answer here: the error term is  $\ln d_{ij}^k$  plus measurement error in trade flows.)
- However, this specification is effectively a gravity equation (which we will see many variants of throughout this course) so this cannot be seen as a test of Ricardo vs some other gravity model.
- In the above specification, note that  $\delta_{ij}$  and  $\delta_j^k$  are fixed-effects. Comments about these:
  - These absorb a bunch of economic variables that are important to the model (eg  $e_j^k$  is in  $\delta_j^k$ ) but which are unknown to us. This is good and bad.
  - The good: we don't have to collect data on the  $e_j^k$  variables—they are perfectly controlled for by  $\delta_j^k$ . (And similarly for other variables like wages and the price indices.) Even if we did have data on these variables such that we could control for them, they would be endogenous and their presence in the regression would bias the results. The fixed effects correct for this endogeneity as well.
  - The bad: The usual problem with fixed-effect regressions is that the types of counterfactual statements you can make are much more limited. However, in this instance, because of the particular structure of this model, there are a surprising number of counterfactual statements that *can* be made with fixed effects estimates only.

### 3.4 An Extension

- A1 (Fréchet distributed technologies) is restrictive. However, consider the following alternative environment:
  - [(i)]
    1. Productivities are drawn from any distribution that has a single location parameter ( $z_i^k$ ).
    2. Production and trade cost differences are small:  $c_{1j}^k \simeq \dots \simeq c_{Ij}^k$ .
    3. CES parameters are identical:  $\sigma_j^k = \sigma$ .
- In this environment, Theorems 3 and 5 hold approximately.
  - Furthermore: Fréchet is the only such distribution in which Theorems 3 and 5 hold exactly, and in which the CES parameter can vary across countries and industries.

### 3.5 Data: Productivity

- Well-known challenge of finding productivity data that is comparable across countries and industries
  - Problem lies in converting nominal revenues into measures of physical output.
  - Need internationally comparable producer price deflators, across countries and sectors (Bernard and Jones, 2001).
- We use what we see to be the best available data for this purpose:
  - ‘International Comparisons of Output and Productivity (ICOP) Industry Database’ from GGDC (Groningen).
- ICOP data:
  - Single cross-section in 1997.
  - Data are available from 1970-2007, but only fit for our purposes in 1997, the one year in which they collected comparable producer price data.
  - Careful attention to matching producer prices in thousands of product lines.
  - 21 OECD countries: 17 Europe plus Japan, Korea, USA.

– 13 (2-digit) manufacturing industries.

- As Bernard, Eaton, Jensen and Kortum (2003) point out, in Ricardian world relative productivity is entirely reflected in relative (inverse) producer prices.

– That is,  $\frac{z_i^k z_{i'}^{k'}}{z_{i'}^k z_i^{k'}} = \left[ \frac{E[p_i^k(\omega)|\Omega_i^k] E[p_{i'}^{k'}(\omega)|\Omega_{i'}^{k'}]}{E[p_{i'}^k(\omega)|\Omega_{i'}^k] E[p_i^{k'}(\omega)|\Omega_i^{k'}]} \right]^{-1}$ .

– This is always true in a Ricardian model (since wages cancel).

- But further impetus here:

– It might be tempting to use measures of ‘real output per worker’ instead as a measure of productivity.

– But statistical agencies rarely observe physical output. Instead they observe revenues ( $R_i^k \equiv Q_i^k P_i^k$ ) and deflate them by some price index ( $P_i^k$ ) to try to construct ‘real output’ ( $\equiv \frac{R_i^k}{P_i^k}$ ).

– In a Ricardian world, then, ‘real output per worker’ =  $\frac{R_i^k / P_i^k}{L_i^k} = \frac{w_i L_i^k}{P_i^k L_i^k} = \frac{w_i}{P_i^k}$ .

– So again wages cancel. In a Ricardian world, statistical agencies’ measures of relative ‘real output per worker’ are just relative inverse producer prices.

### 3.6 Final Specification

- With all of the above comments included the final specification used by CDK (2010) is:

$$\ln x_{ij}^k - \ln \pi_{ii}^k = \delta_{ij} + \delta_j^k - \theta \ln p_i^k + \varepsilon_{ij}^k$$

- OLS requires the orthogonality restriction that  $E[\ln P_i^k | d_{ij}^k, \delta_{ij}^k, \delta_j^k] = 0$ .

– CDK can’t just control for trade costs, because the full measure of trade costs  $d_{ij}^k$  is not observable (trade costs are hard to observe, as we’ll discuss in Week 8).

– Recall that  $\varepsilon_{ij}^k$  includes the component of trade costs that is not country-pair or importer-industry specific.

- This orthogonality restriction is probably not believable. So also present IV specifications in which  $\ln P_i^k$  is instrumented with log R&D expenditure (in  $i$  and  $k$  in 1997).

### 3.7 Results

Dependent variable:	log(corrected exports)	log(exports)
	(1)	(2)
log (productivity, based on producer prices)	1.123 (0.099)***	1.361 (0.103)***
Observations	5,652	5,652
R-squared	0.856	0.844

Notes: Regressions include exporter-times-importer fixed effects and importer-times-industry fixed effects. Robust standard errors in parentheses.

#### Endogeneity Concerns

- Concerns about OLS results:
  1. Measurement error in relative observed productivity levels: attenuation bias.
  2. Simultaneity: act of exporting raises fundamental productivity.
  3. OVB: eg endogenous protection (relative trade costs are a function of relative productivity)
- Move to IV analysis:
  - Use 1997 R&D expenditure as instrument for productivity (inverse producer prices).
  - This follows Eaton and Kortum (2002), and Griffith, Redding and van Reenen (2004).
- Also cut sample: pairs for which  $d_{ij}^k = d_{ij} \cdot d_j^k$  is more likely.

#### IV Results

Dependent variable:	log(corrected exports)	log(exports)	log(corrected exports)
	(1)	(2)	(3)
log (productivity, based on producer prices)	6.534 (0.708)***	11.10 (0.981)***	4.621 (0.585)***
Sample	Entire	Entire	EU only
Observations	5,576	5,576	2,162
R-squared	0.747	0.460	0.808

Notes: Regressions include exporter-times-importer fixed effects and importer-times-industry fixed effects. Robust standard errors in parentheses.

### 3.8 Counterfactual Predictions

- Remainder of paper does something different: exploring the model’s response to counterfactual scenarios.
- CDK’s scenarios aim to answer: How ‘important’ is (cross-industry) Ricardian comparative advantage for driving trade flows and gains from trade?
- CDK actually answer a closely related question:
  - Suppose that, for any pair of exporters, there were no fundamental relative productivity differences across industries. What would be the consequences of this for aggregate trade flows and welfare?
- More formally:
  1. Fix a reference country  $i_0$ .
  2. For all other countries  $i \neq i_0$ , assign a new fundamental productivity  $(z_i^k)' \equiv Z_i \cdot z_{i_0}^k$ .
  3. Choose  $Z_i$  such that terms-of-trade effects on  $i_0$  are neutralized:  $(w_i/w_{i_0})' = (w_i/w_{i_0})$ .
  4. Let  $Z_{i_0} = 1$  (normalization).
  5. Refer to all of this as ‘removing country  $i_0$ ’s Ricardian comparative advantage.’
- Questions:

1. How to compute  $Z_i$ ? (Lemma 4)
2. How to solve for endogenous GE responses under counterfactual scenario? (Theorem 5)
3. What model parameters and ingredients (eg trade costs) are needed to answer (a) and (b)?

**Lemma 3.** *Suppose that Assumptions A1-A5 hold. For all countries  $i \neq i_0$ , adjustments in absolute productivity,  $Z_i$ , can be computed as the implicit solution of*

$$\sum_{j=1}^I \sum_{k=1}^K \frac{\pi_{ij}^k (z_i^k / Z_i)^{-\theta} \alpha_j^k \gamma_j}{\sum_{i=1}^I \pi_{i,j}^k (z_i^k / Z_i)^{-\theta}} = \gamma_i$$

(Only need data  $(\pi_{ij}^k, z_i^k)$  and  $\theta$ . This is a trick first spotted in Dekle, Eaton and Kortum (2007, IMF paper).)

**Theorem 4.** *Suppose that Assumptions A1-A5 hold. If we remove country  $i_0$ 's Ricardian comparative advantage, then counterfactual (proportional) changes in bilateral trade flows,  $x_{ij}^k$ , satisfy*

$$\widehat{x}_{ij}^k = \frac{z_i^k / Z_i^{-\theta}}{\sum_{i=1}^I \pi_{i,j}^k (z_i^k / Z_i)^{-\theta}}$$

(Again, only need data  $(\pi_{ij}^k, z_i^k)$  and  $\theta$ .)

**Theorem 5.** *And counterfactual (proportional) changes in country  $i_0$ 's welfare,  $W_{i_0} \equiv w_{i_0} \cdot \prod_k (p_{i_0}^k)^{-\alpha_{i_0}^k}$ , satisfy*

$$\widehat{W}_{i_0} = \prod_{k=1}^K \left[ \sum_{i=1}^I \pi_{i i_0}^k \left( \frac{z_i^k}{z_{i_0}^k Z_i} \right)^{-\theta} \right]^{\alpha_{i_0}^k / \theta}$$

We will usually normalize this by the total gains from trade ( $\equiv$  welfare loss of going to autarky):

$$GFT_{i_0} \equiv \prod_{k=1}^K (\pi_{i_0 i_0}^k)^{-\alpha_{i_0}^k / \theta}$$

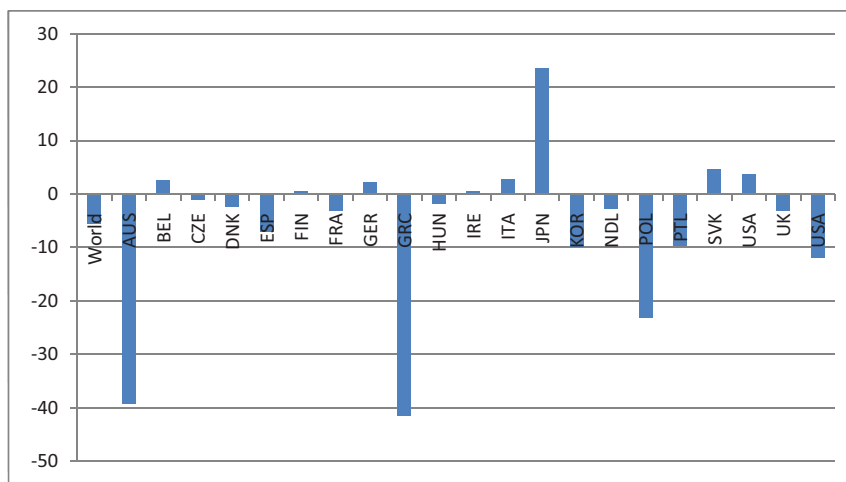
### 3.9 Revealed Productivity Levels

- Counterfactual method requires data on relative  $z_i^k$ .
  - Could use data on  $z_i^k$  from ICOP, but empirics suggest measurement error is a problem.
  - Instead use trade flows to obtain ‘revealed’ productivity:

– Estimate fixed effect  $\delta_i^k = \theta \ln z_i^k$  from:

$$\ln x_{ij}^k = \delta_{ij} + \delta_j^k + \delta_i^k + \varepsilon_{ij}^k$$

- This is a theoretically-justified analogue of Balassa’s (1965) ‘revealed comparative advantage’ measure.



- Some countries (e.g. Japan) appear to gain from removing Ricardian CA.
- How is this possible?
- In both model and in calibration, nothing restricts CA from coming about as purely a supply-side (conventional Ricardian) phenomenon.
  - Upper-tier utility function’s Cobb-Douglas shares could vary by country and industry (demand-driven CA). Recall that we didn’t need to estimate these, so didn’t restrict them in any way.
  - And trade costs were unrestricted (so they can in principle vary in such a way as to create CA). Again, recall that these were not estimated and hence not restricted (a common approach is to make TCs a function of distance, which would not create CA).
- With this much generality, it is possible that when you remove a country’s supply-side (ie Ricardian) CA then it is actually better off.

- Put loosely, this requires that, prior to this change, supply-side and demand/TC-driven CA were offsetting one another. That is, countries prefer (*ceteris paribus*) the goods that they're better at producing.
- This 'offsetting' sources of CA will mean that autarky prices are actually similar to realized trading equilibrium prices.
- The paper discusses some calibration exercises that confirm this intuition:
  - If we restrict tastes to be homogeneous across countries (taking the Cobb-Douglas weights of world expenditure shares), or TCs not to create CA, then fewer countries lose from removing Ricardian CA.
  - If we impose both restrictions then no countries lose from removing Ricardian CA.

## 4 Rough Ideas for Future Work

- Can one construct a true 'test' of the Ricardian model against other models (eg Heckscher-Ohlin, imperfect competition models)?
  - Recall Harrigan 1 (2003, Handbook survey): Simple partial equilibrium supply-and-demand models predict this relationship too. "A truly GE prediction of Ricardian models is that a productivity advantage in one sector can actually *hurt* export success in another sector."
  - And Harrigan 2 (2003, Handbook survey): A test of a trade model needs to have a plausible alternative hypothesis built in which can be explicitly tested (and perhaps rejected).
- Theoretical papers on the Ricardian model that haven't (to my knowledge) been explored empirically yet:
  - Jones (ReStud, 1961)
  - Costinot (Ecta, 2009)
  - Wilson (Ecta, 1980)
- How correlated are tastes and technology (and trade costs...and even factor endowments) in the world we inhabit, and how does this feature of reality shape the gains from trade (due to CA) that countries can possibly enjoy?



- Are there any ways to get around the Deardorff (1984) selection problem less parametrically than in CDK (2012)?
  - Settings in which we actually observe productivities of counterfactual activities? (We will see a bit of this in the next lecture).
  - Revealed preference techniques?
  - Methods that could bound the behavior of a non-parametric Ricardian economy?

MIT OpenCourseWare  
<http://ocw.mit.edu>

14.581 International Economics I  
Spring 2013

For information about citing these materials or our Terms of Use, visit: <http://ocw.mit.edu/terms>.