

MIT OpenCourseWare  
<http://ocw.mit.edu>

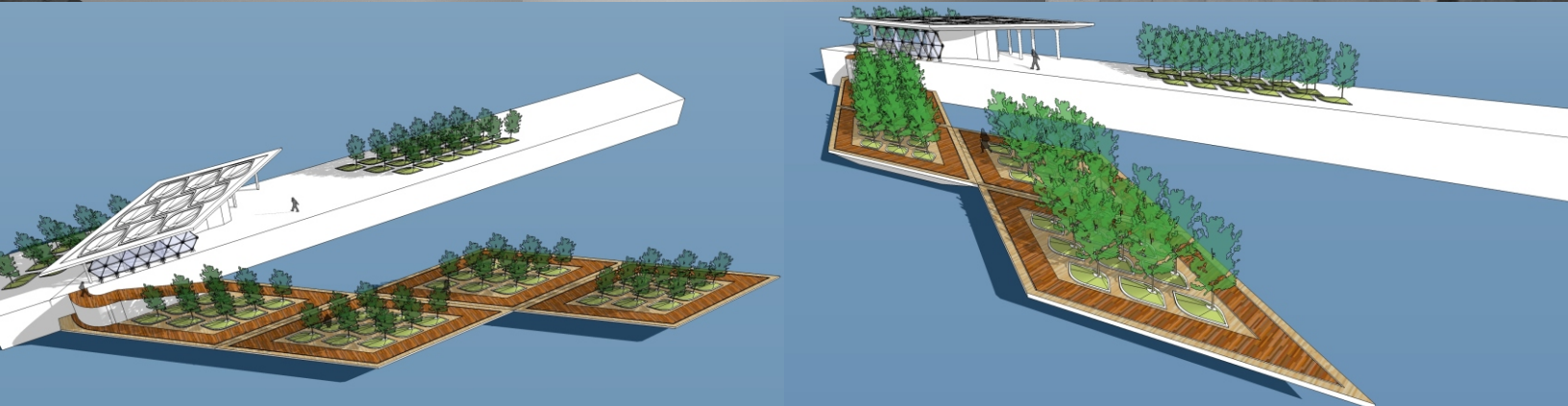
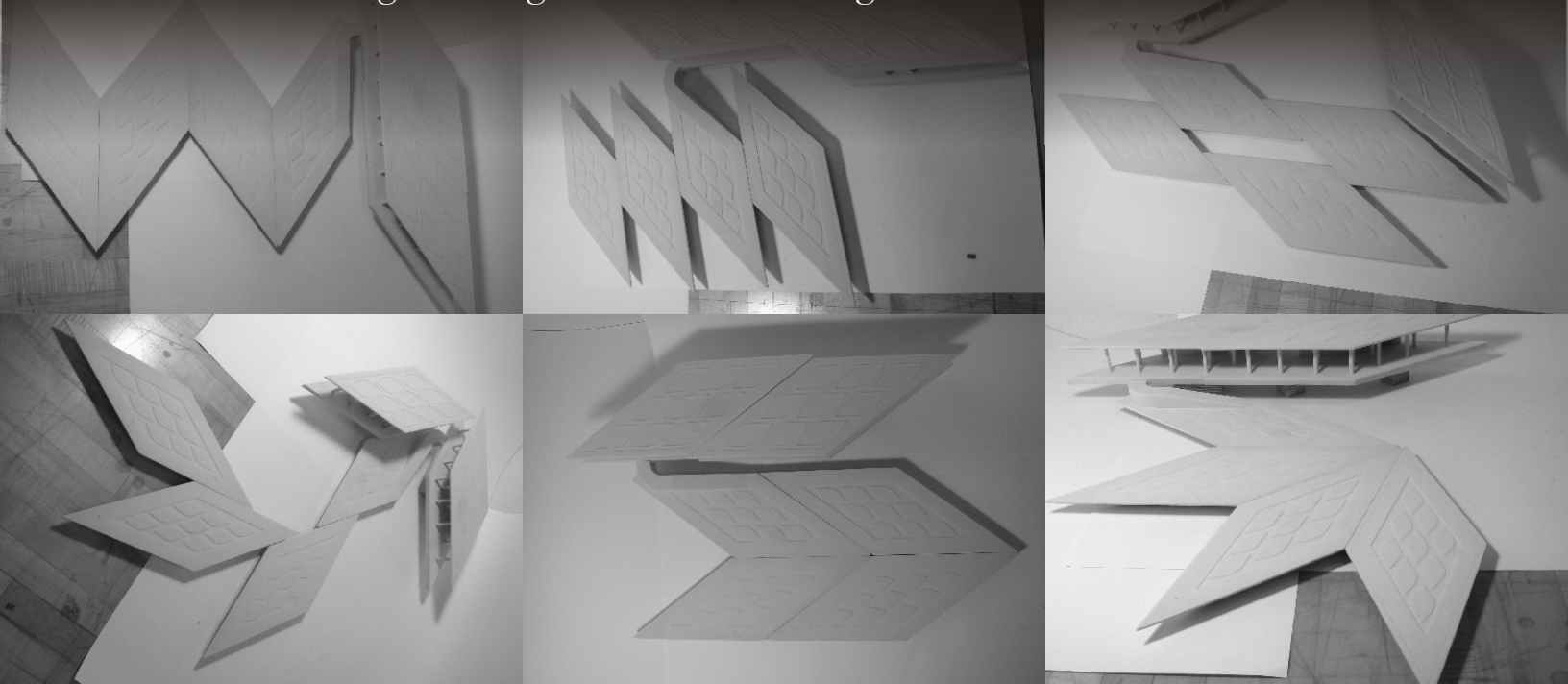
4.510 Digital Design Fabrication  
Fall 2008

For information about citing these materials or our Terms of Use, visit: <http://ocw.mit.edu/terms>.



# Water Taxi Stop | Green Injection

## Digital Design Fabrication - Assignment #4

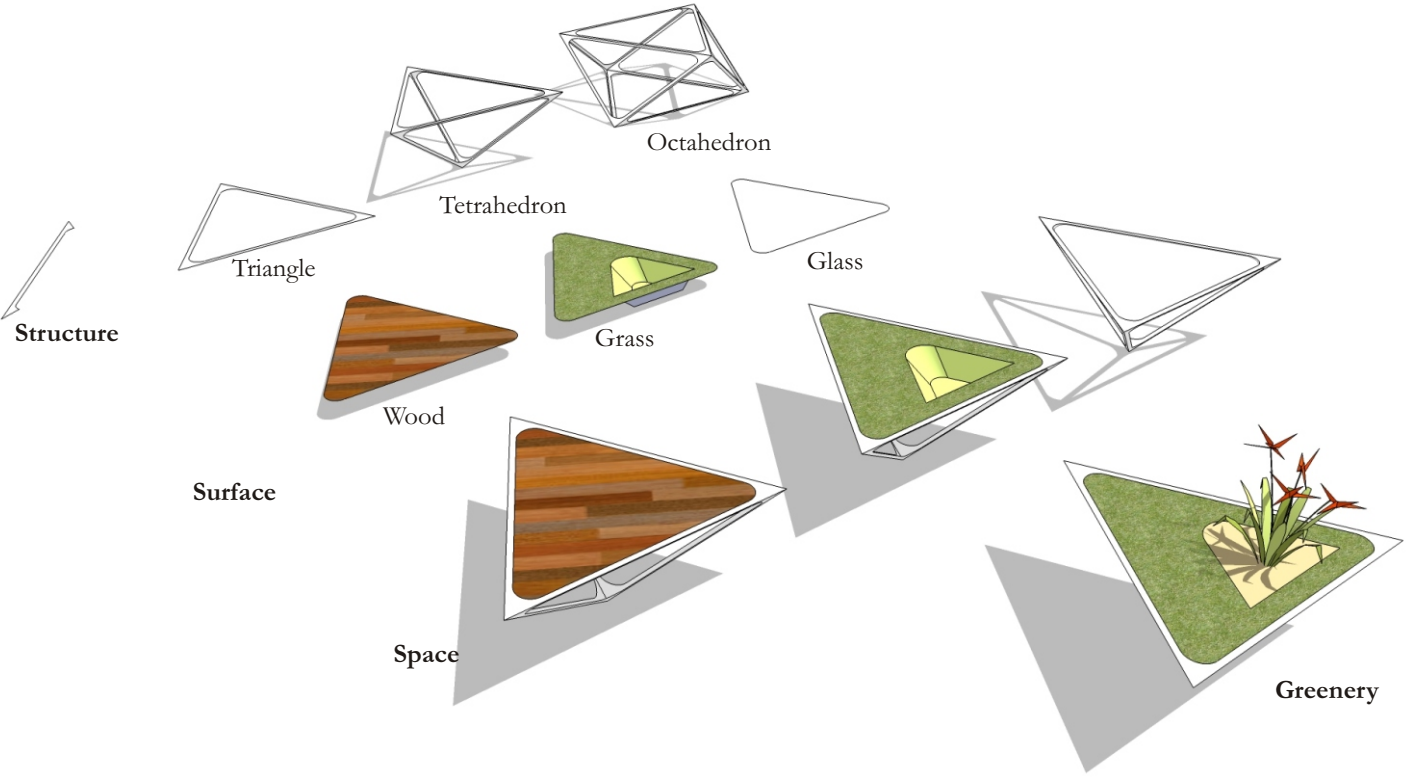


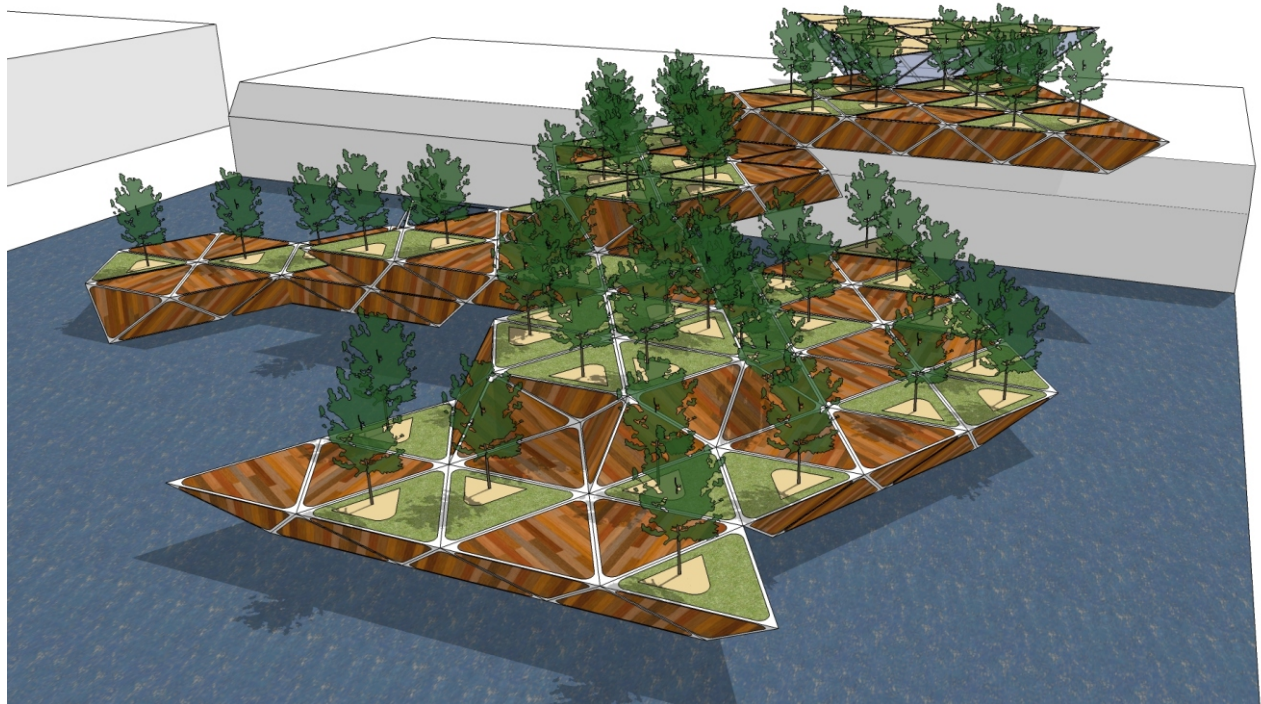
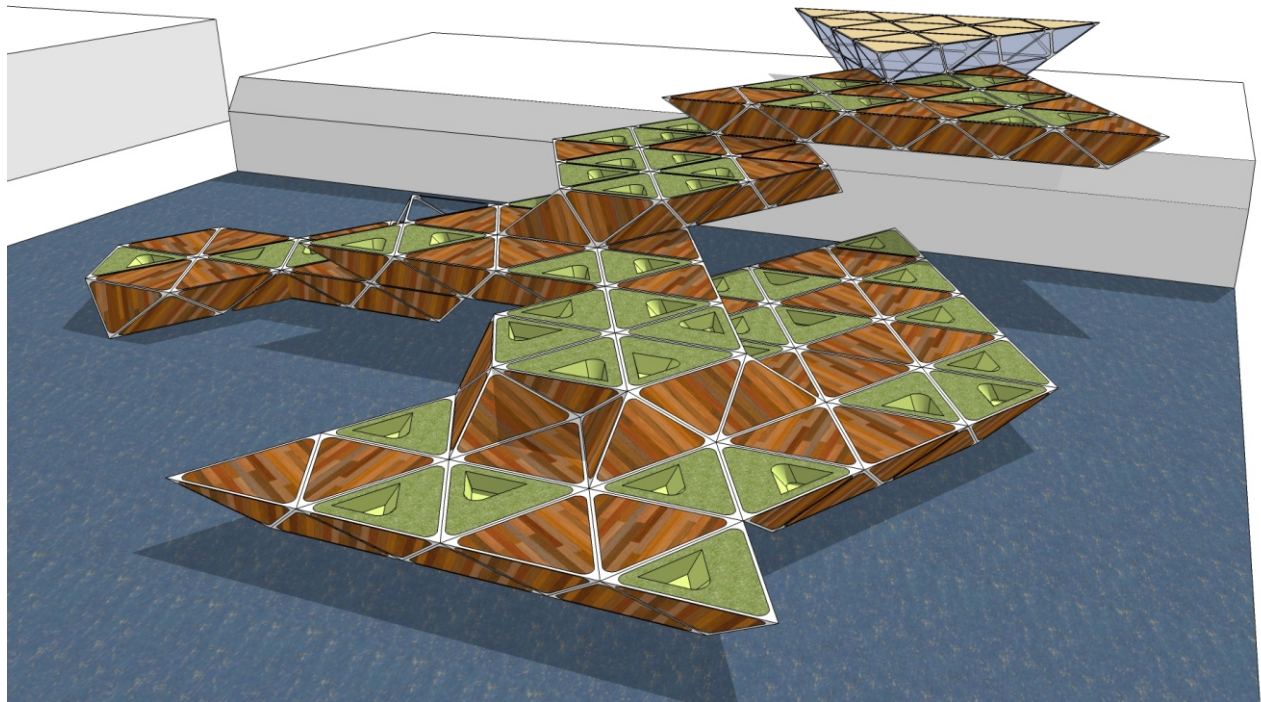
# Site Consideration

My first reaction when visiting the site is that it's lack of greenery and a sense of public space. As the area where cultural facilities located, this harbor responsible in providing a convenient public space as a transitional space from the water to the land. This design aim to create a seamless transition as it provides the dock not just as a platform for embarkation but also as a floating garden.

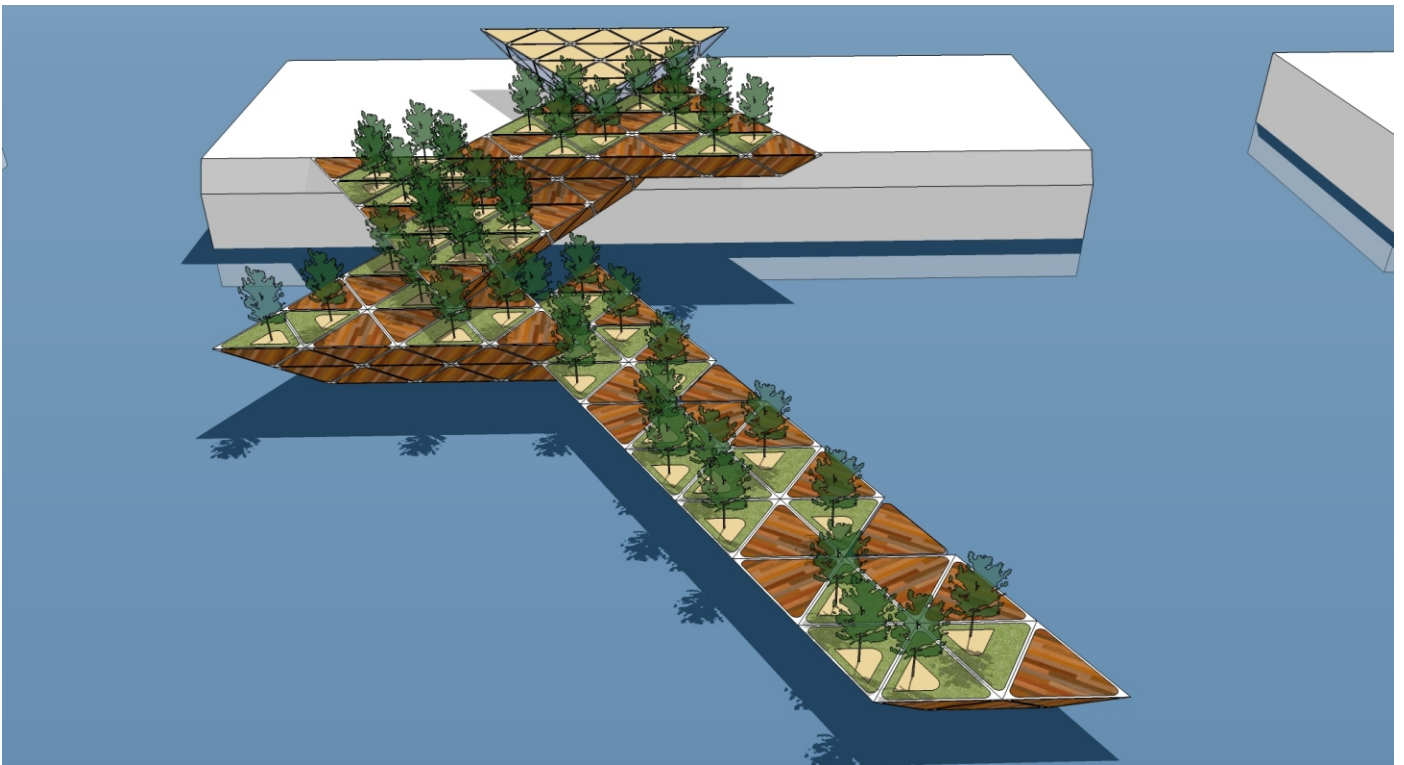
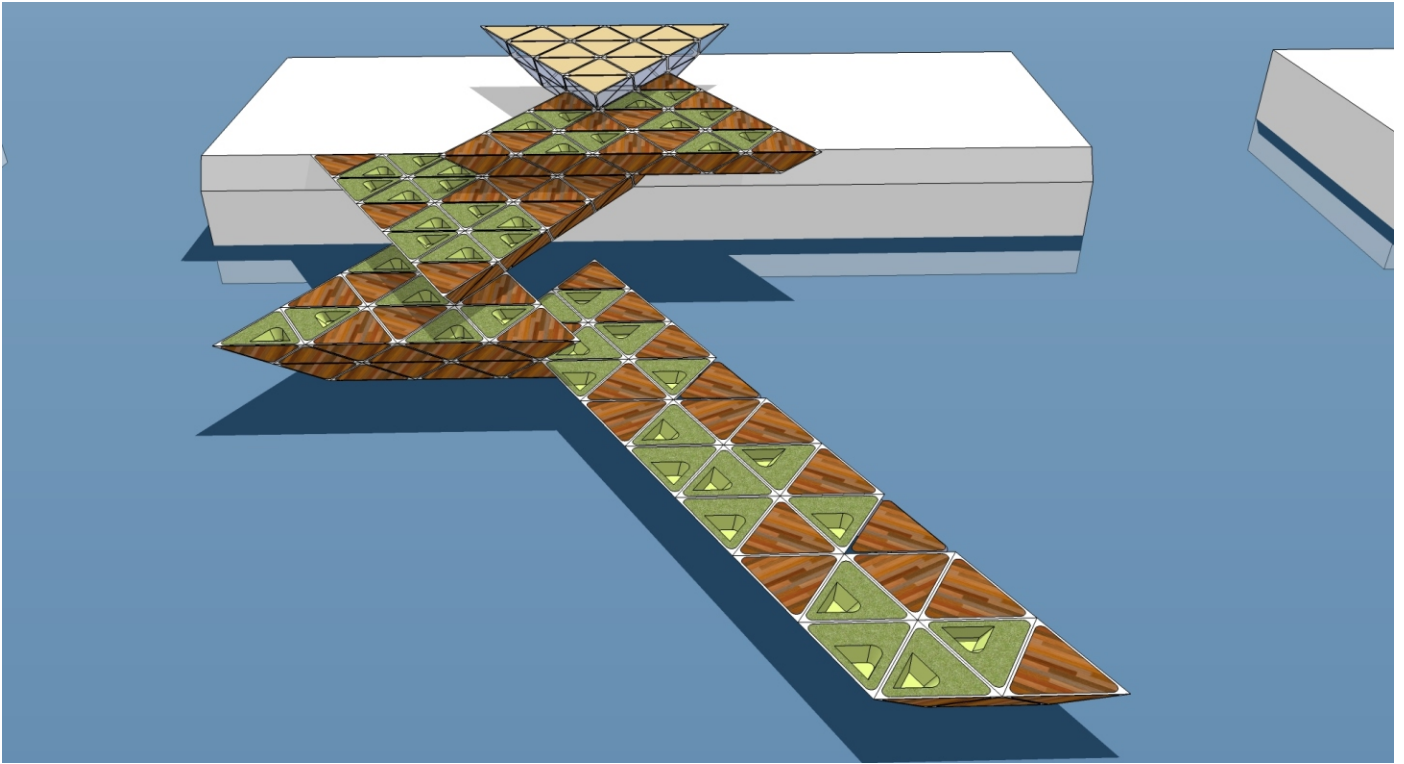


# Element & Component

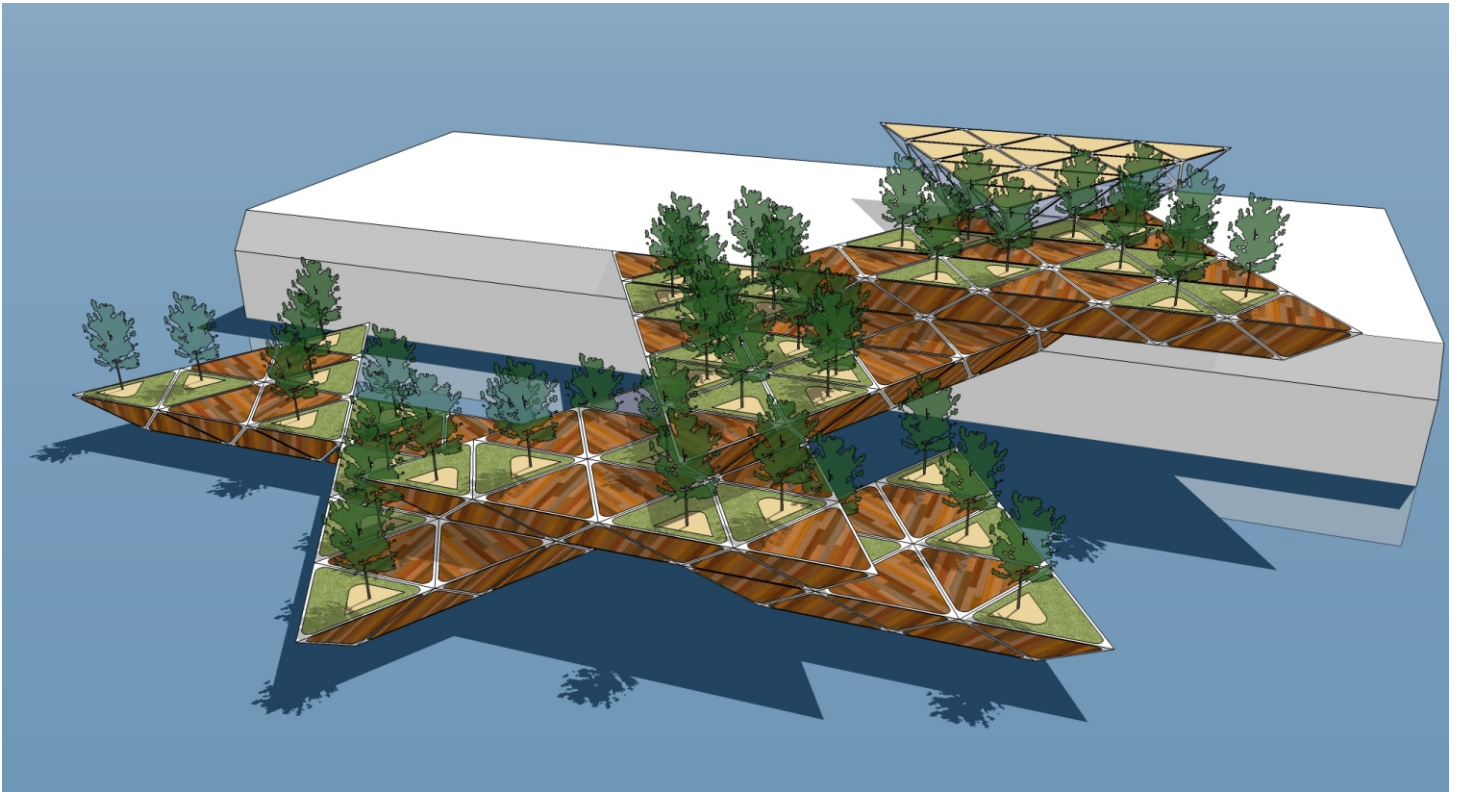
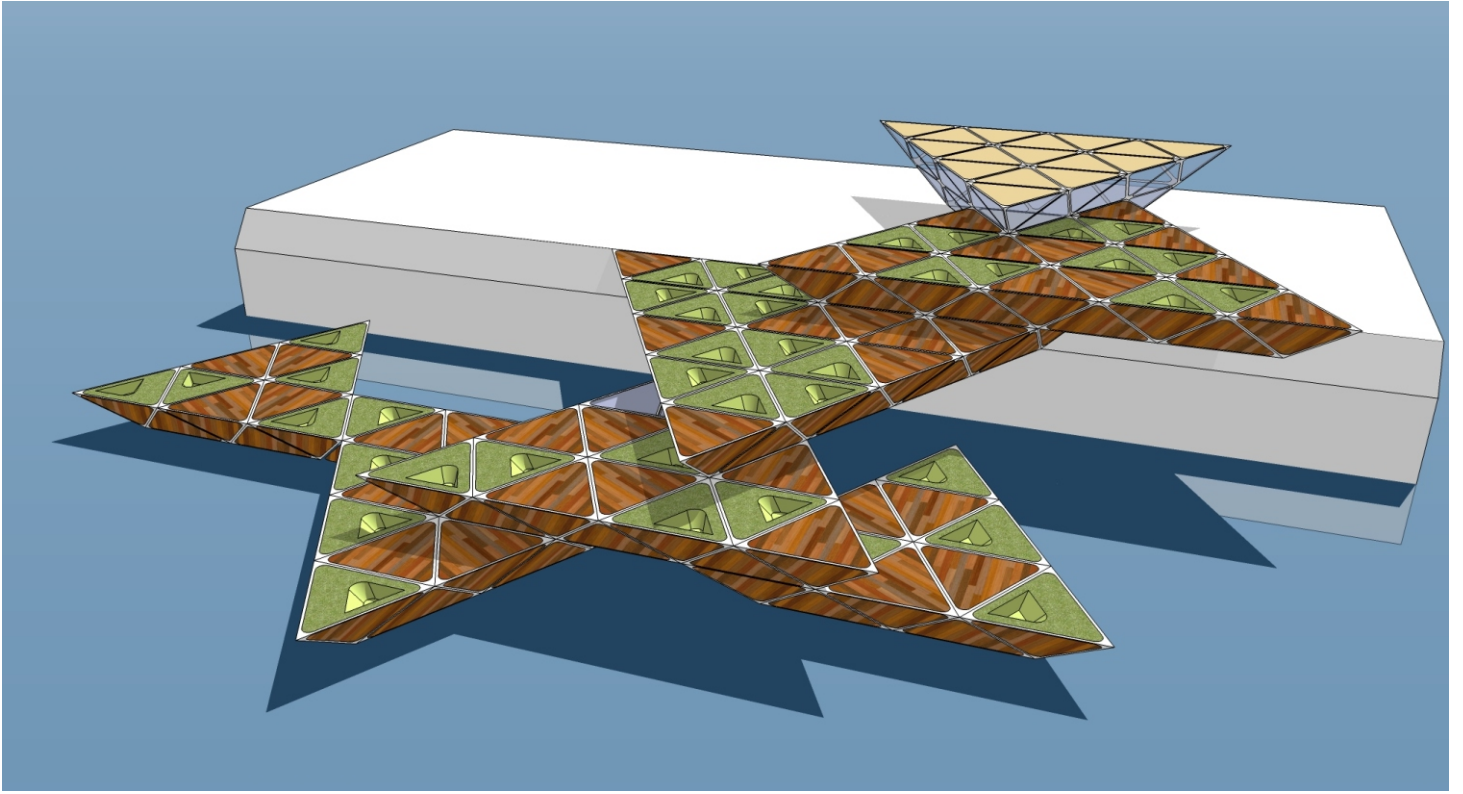




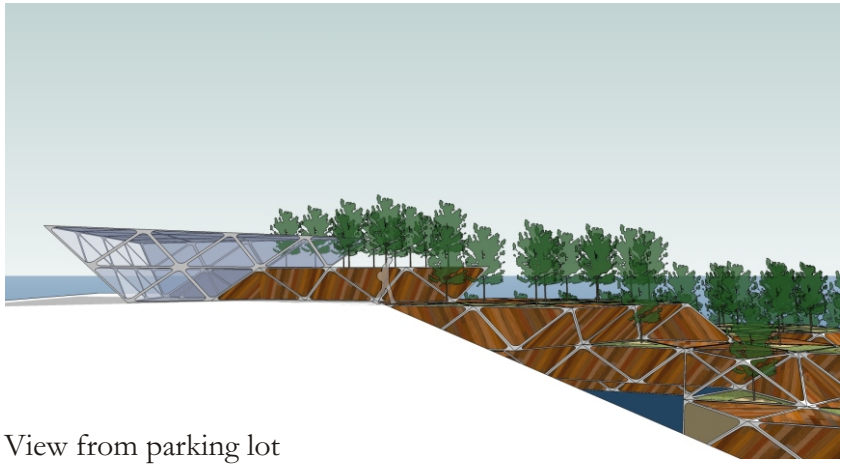
Variant #1



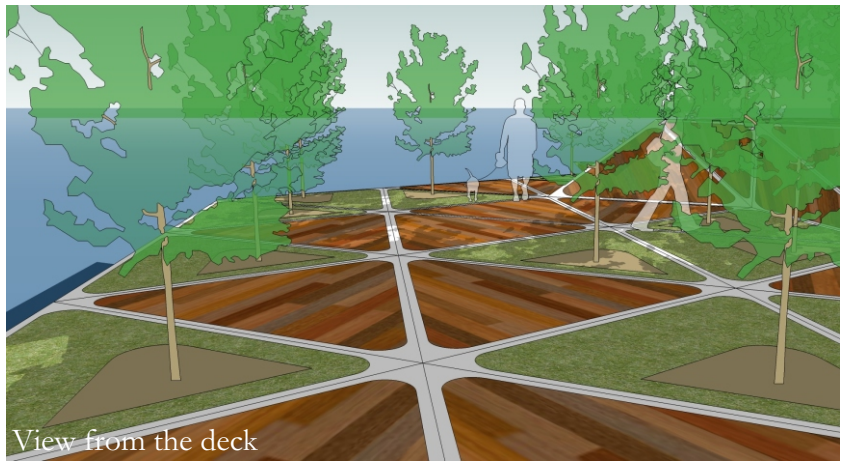
Variant #2



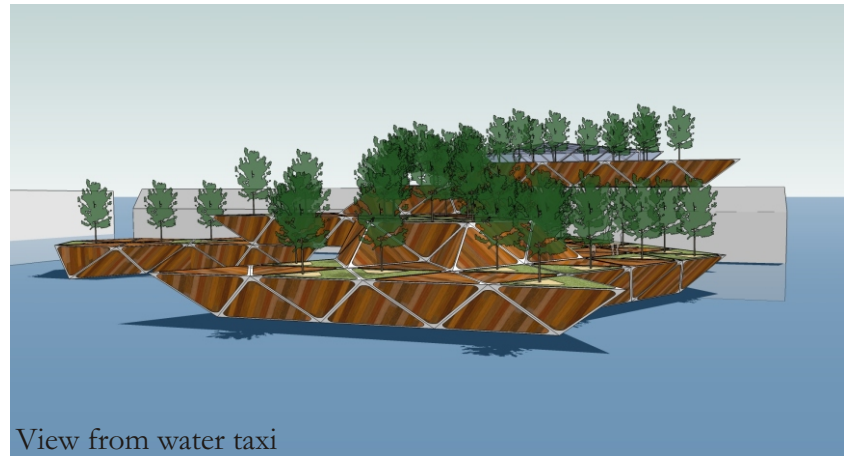
Variant #3



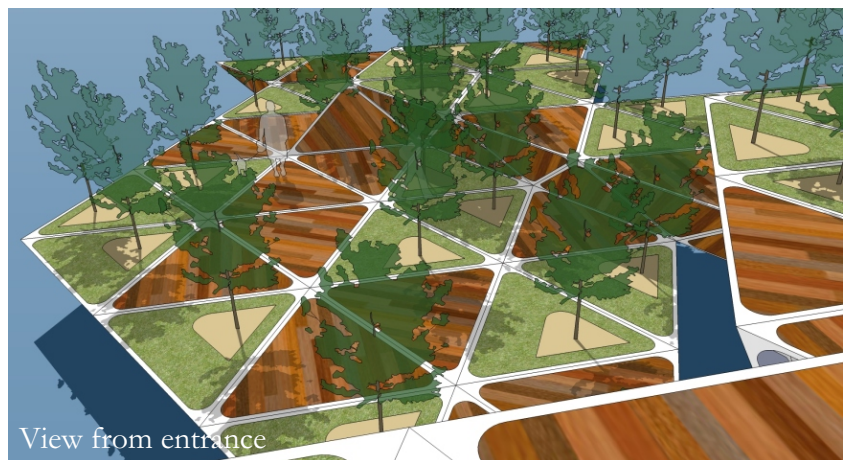
View from parking lot



View from the deck



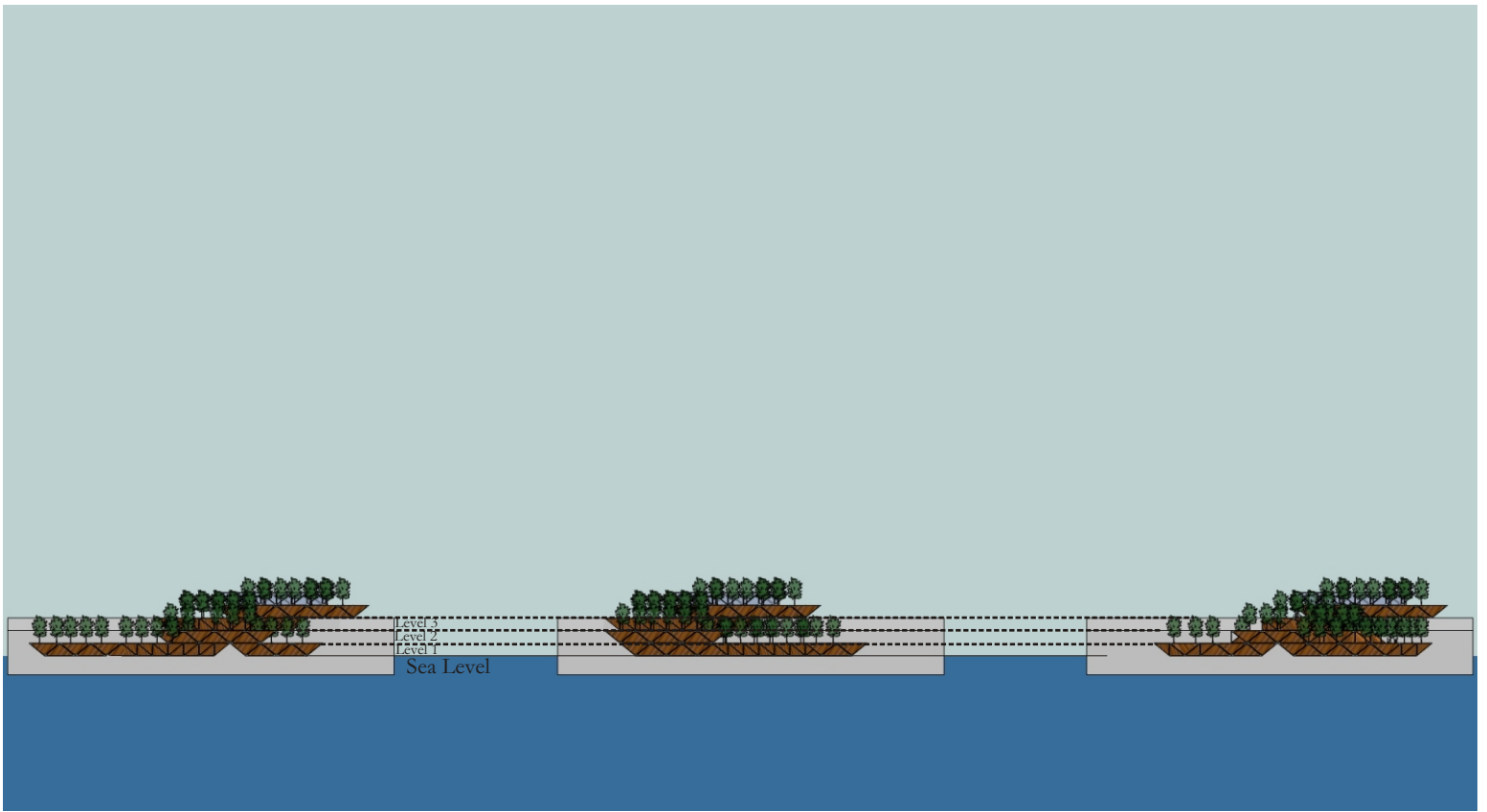
View from water taxi



View from entrance

Ambiance

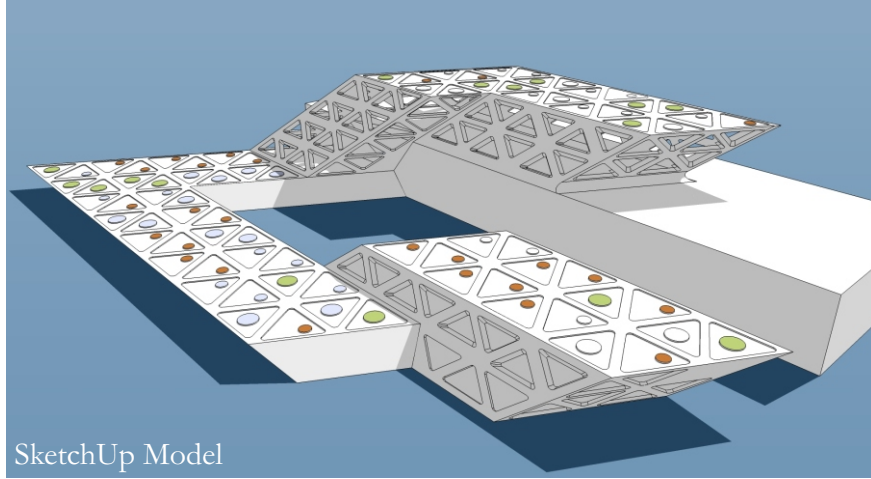




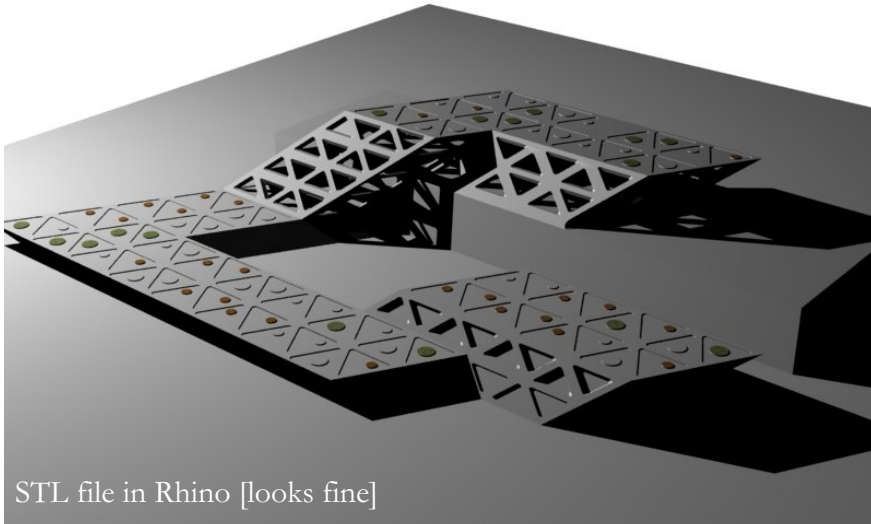
Levelling for different height of boat

# First attempt on 3D printing [Failed]

The model was done with minimum 2 mm thickness. However, it was converted in a wrong way when opened in RPL machine. The thickness become less than 2 mm.



SketchUp Model



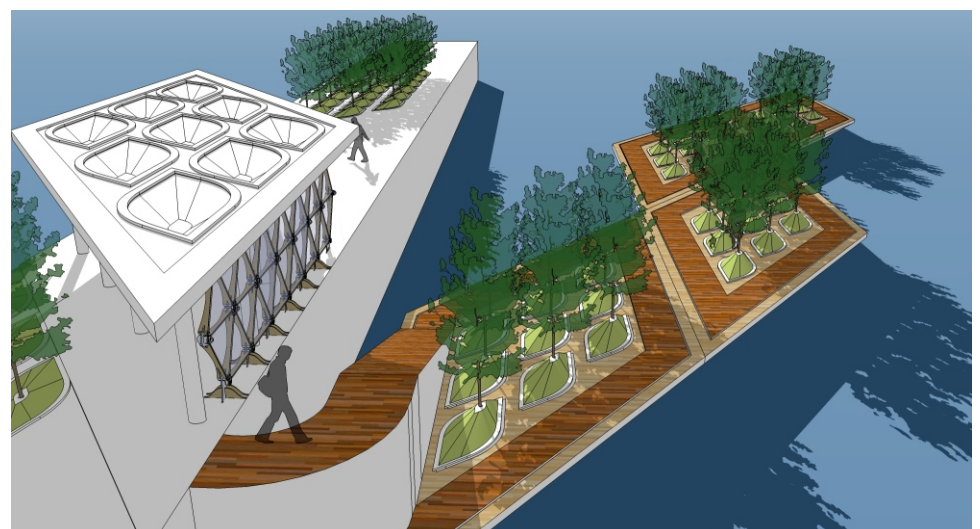
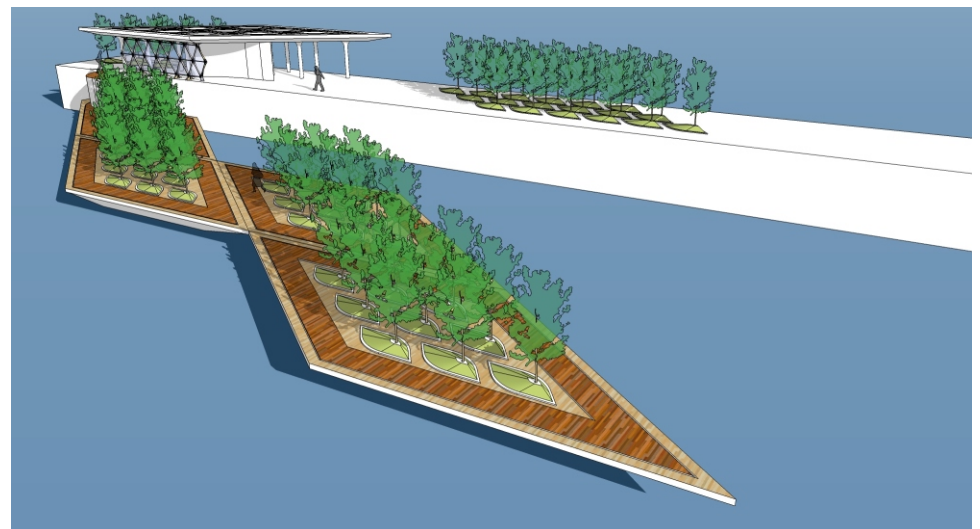
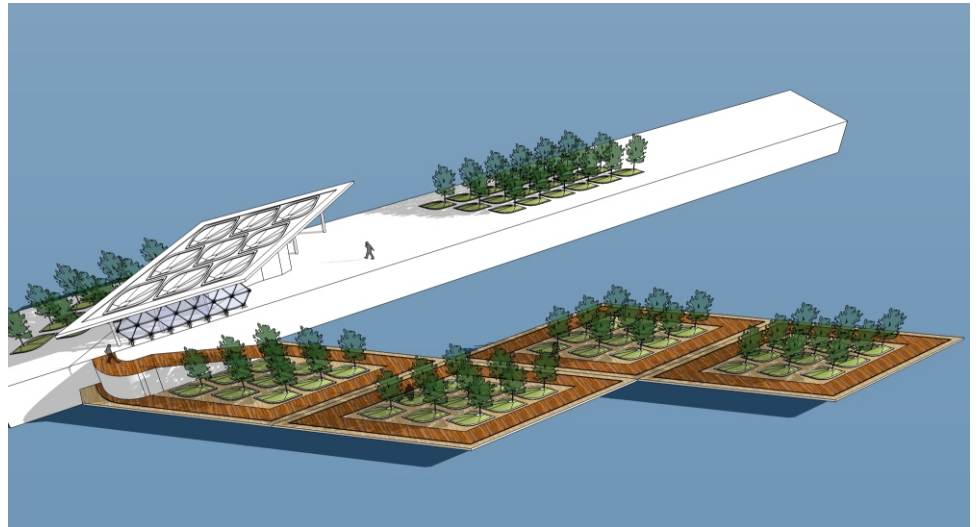
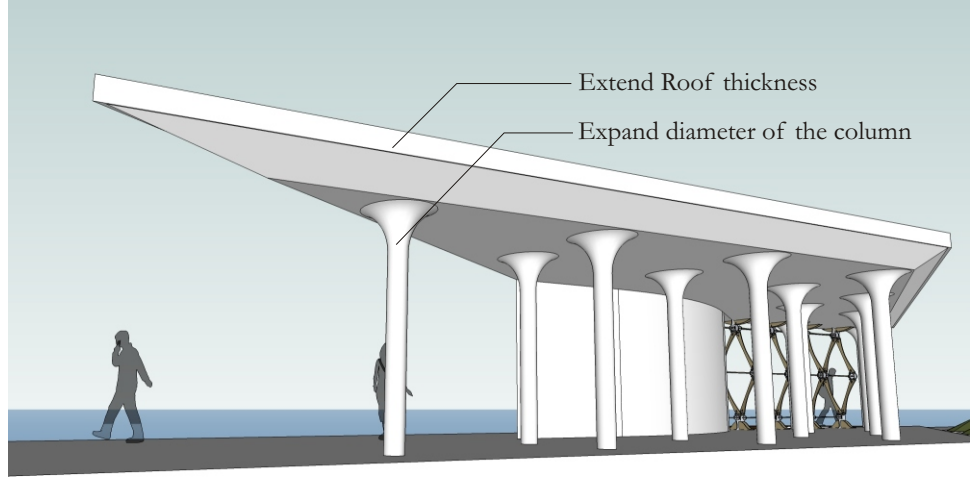
STL file in Rhino [looks fine]



3D print result

# Second attempt

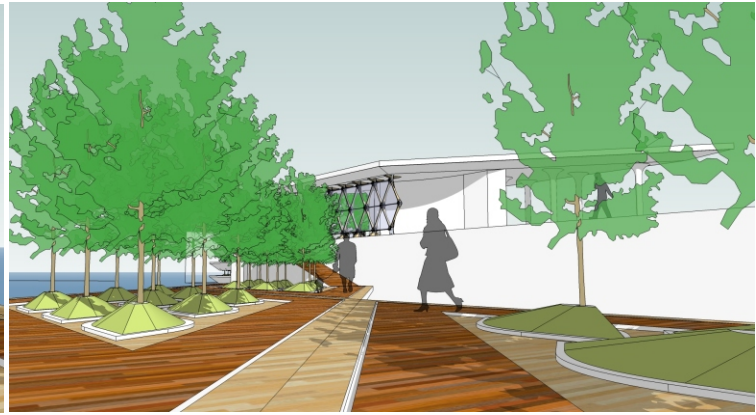
To anticipate the conversion, dimension of the model was thickened larger than its original dimension. The roof became 4mm (origin was 2.5mm) and the column diameter became 3 mm (used to be 2 mm)



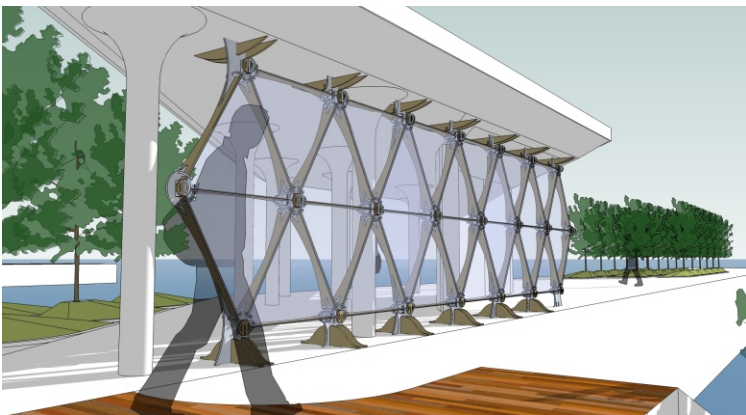
Aerial View



View on the shelter area

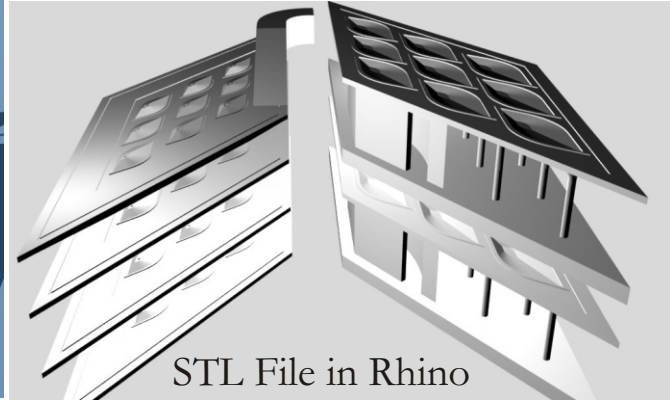
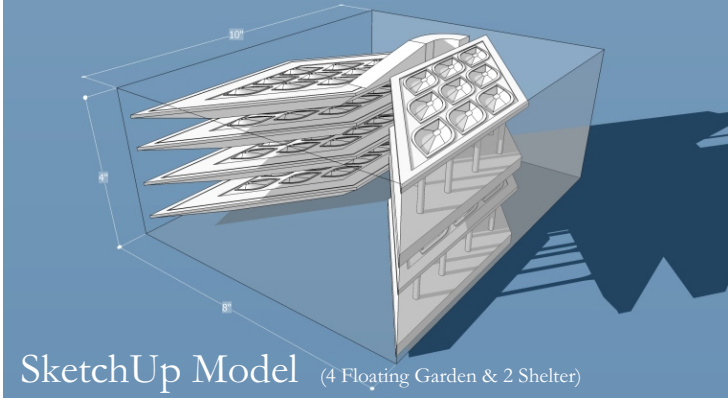


View on the floating garden area

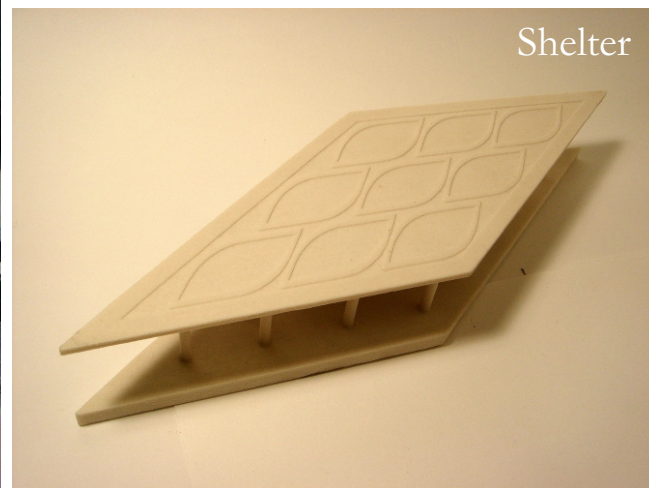
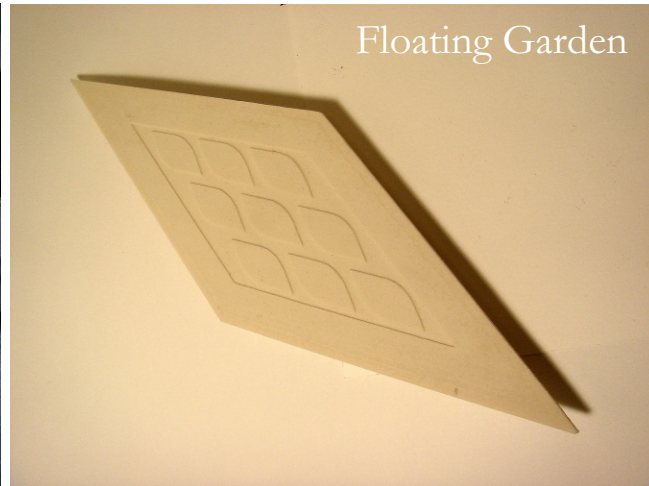


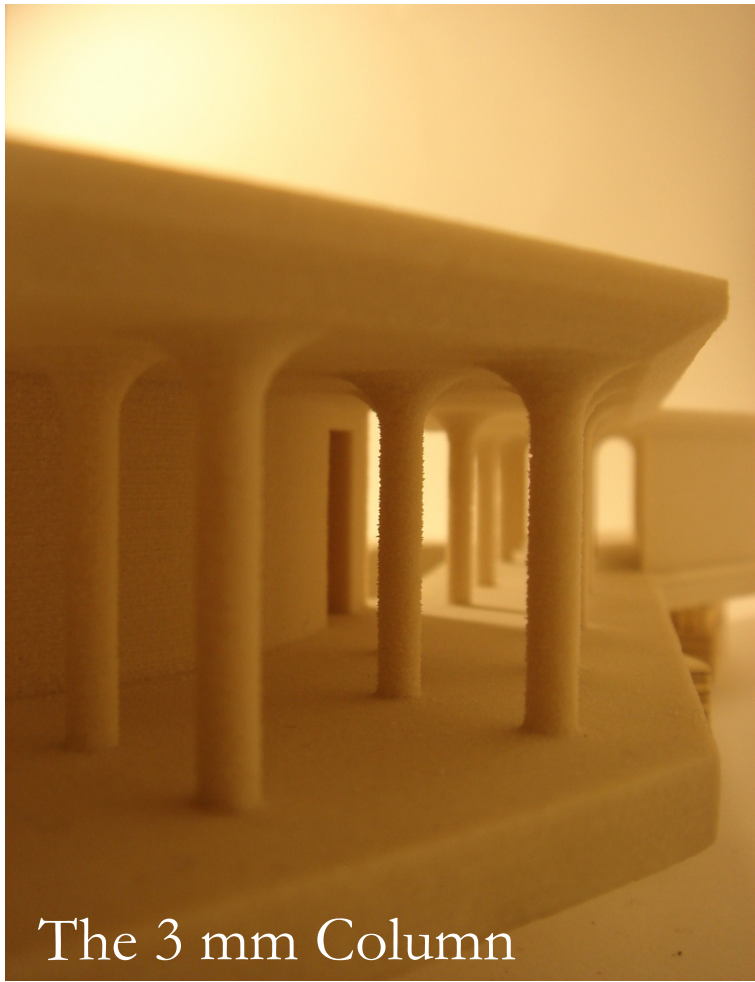
View on the wall panel

Ambiance

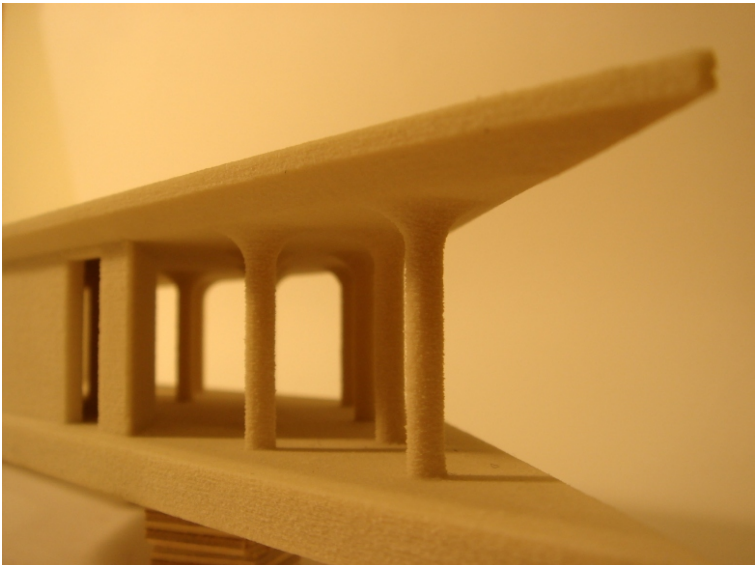
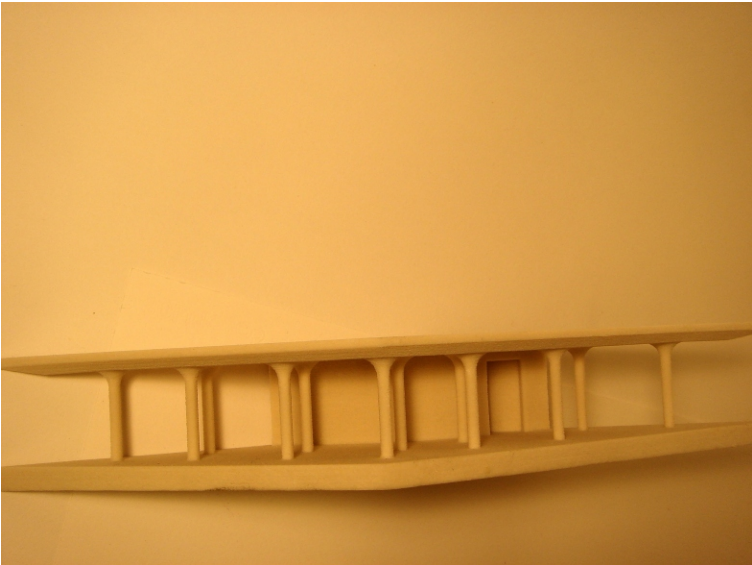


## 3D Print result

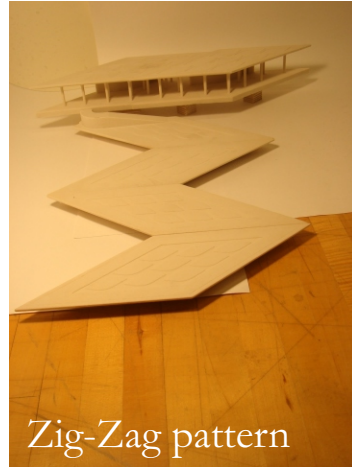
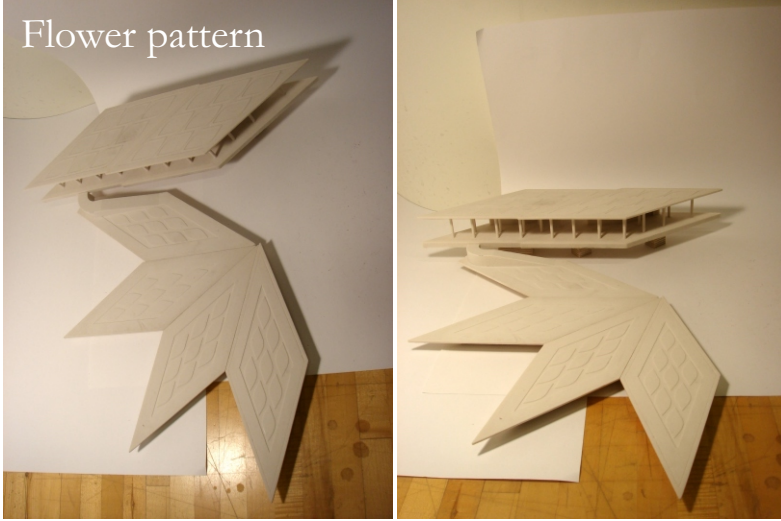




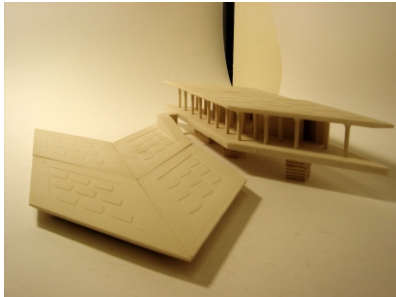
The 3 mm Column



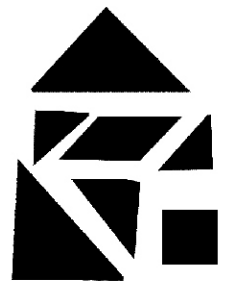
Flower pattern



Zig-Zag pattern

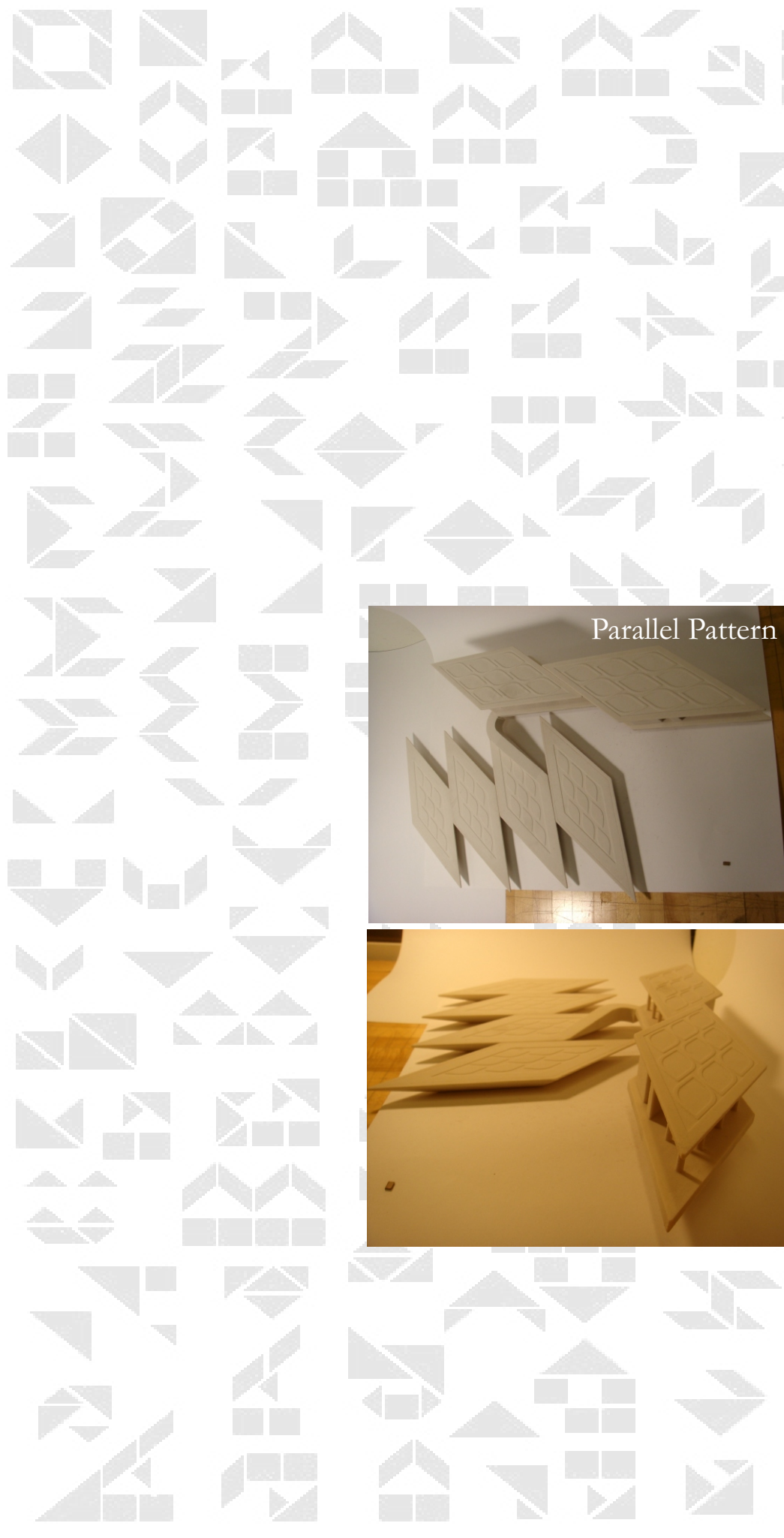


Wider garden

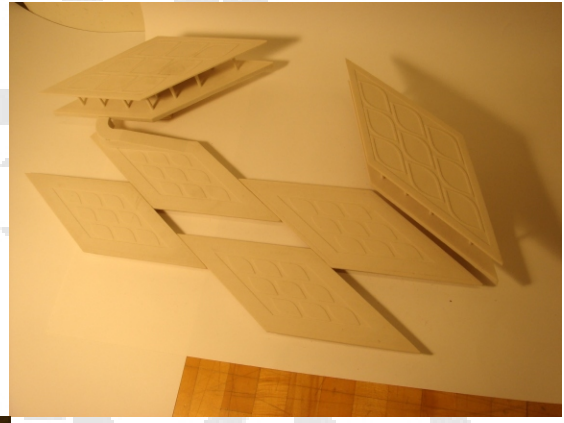
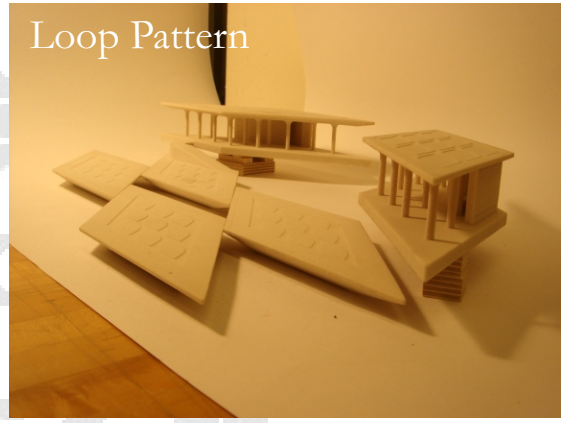


## Various Combination of the Floating Garden

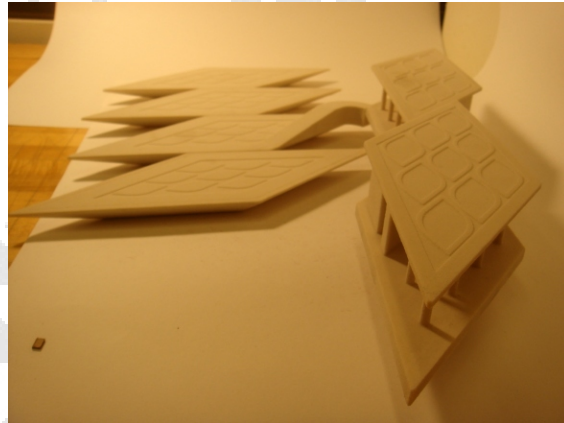
Inspired by the Tangram Pattern, the floating garden is meant to be an active garden and provide a green space for the Boston inner-harbor area which has lack of greenery. These dynamic arrangements emphasizes the kinetic quality of the station to gives an ever-changing sense of arrival and departure at the same time.



Loop Pattern



Parallel Pattern



Rotation Pattern

